



# OptiVisus 20 year Anniversary Seminar

## Empowering Megapixel

The Comprehensive IP Surveillance  
Systems for Enterprise




Henry Ho  
Senior Sales Director



- ❖ About GVD
- ❖ Product Overview
- ❖ Core Technology
- ❖ Case Study
- ❖ Benchmark & Testimonials



Sep,2009

 About GVD





# Who We Are

## Our background

- INVESTORS  
GVD raised capital from Venture Capital in Silicon Valley
- WORKERS  
GVD hires experts with different professional backgrounds
- PARTNERS  
GVD partners with ADT, GE, Sony, Arecont other IP surveillance leaders

## What we offer

- TECHNOLOGY  
GVD is the expert of **empowering megapixel Technology.**
- PRODUCTS  
GVD supplies Turnkey solution for **recording, video management & 3<sup>rd</sup>party integration** to meet the needs of enterprise customers
- SERVICES  
GVD provides intensive tech support and training for our customers





# Where We Are

## Contact Us

### Taipei Headquarters Customer Support Center

Tel: +886-2-2516-6001

Fax: +886-2-2516-6201

Address: 7F., No.143, Sec. 2, Minsheng East Rd., Taipei 104, Taiwan  
104 台北市中山區民生東路二段143號7F

Email: [sales@gvddigital.com](mailto:sales@gvddigital.com)

[support@gvddigital.com](mailto:support@gvddigital.com)



### USA Customer Support Center

Tel: +1-925-399-6300

Fax: +1-925-553-2688

Address: 6200 Stoneridge Mall Road, Suite 300 Pleasanton, CA 94588 USA

Email: [usa\\_sales@gvddigital.com](mailto:usa_sales@gvddigital.com)

[usa\\_support@gvddigital.com](mailto:usa_support@gvddigital.com)

**GVD**  
GENIUS VISION DIGITAL

Empowering Megapixel

The Comprehensive IP Surveillance Systems for Enterprise

**E=mc<sup>2</sup> Series**

ACTI  
APPRO  
Arecont  
AXIS  
BOSCH  
S3 Security  
HIKVISION  
Infinova  
QIRVision  
MESSCA  
Panasonic  
PELCO  
PIXORD  
SAMSUNG  
SONY  
VIVOTEK

5

# Product Overview





# Product Overview



## Integration Gateway

Web-based Third Party Security  
System Integration



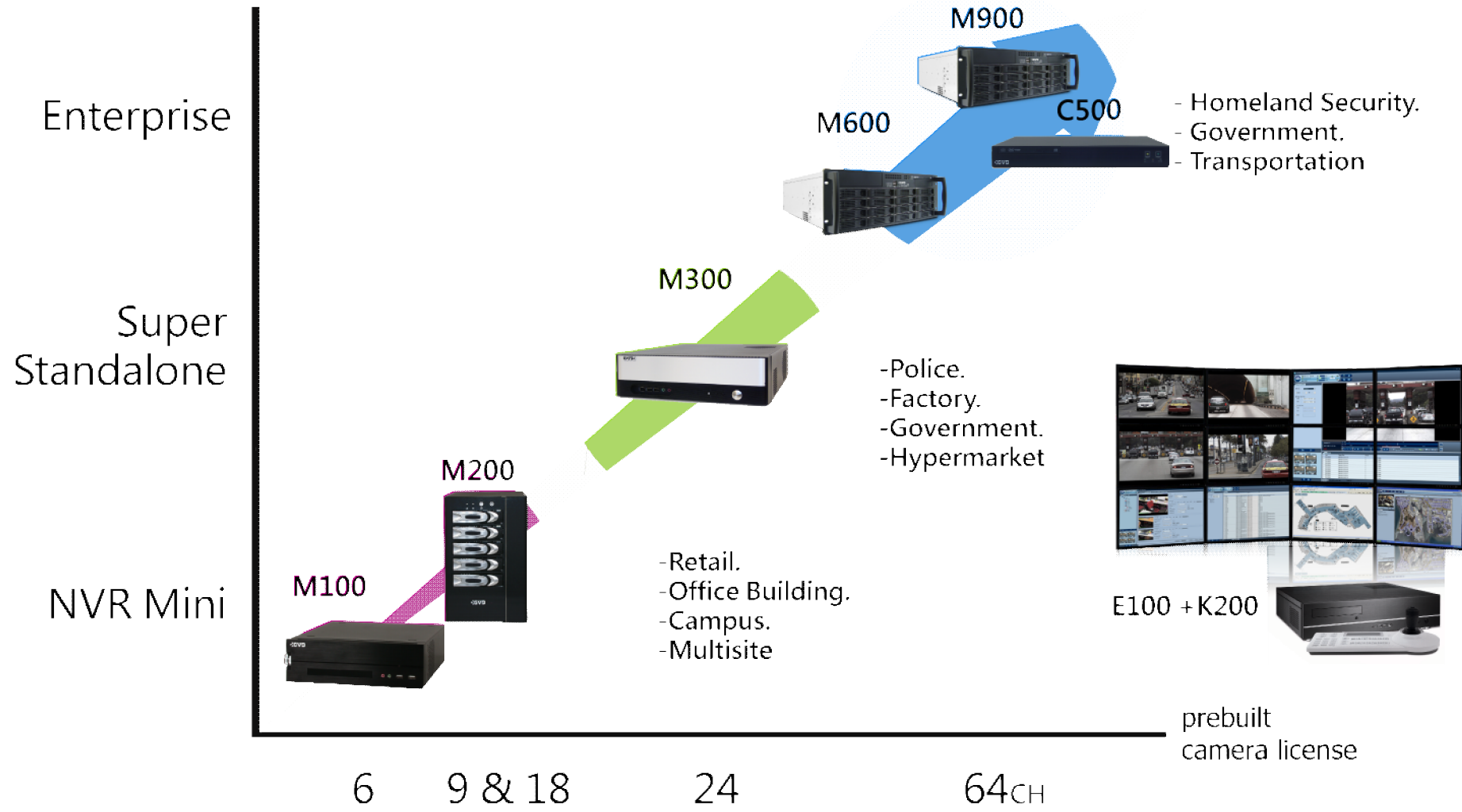
The GVD C Series Integration Gateway is a web-based integrated video security and facility management solution that provides comprehensive integration of disparate video systems and third party subsystems, such as DVRs, access control, intrusion detection, and fire/burglar alarm.

management.



# Product Overview

NVR  
model





 Core Technology

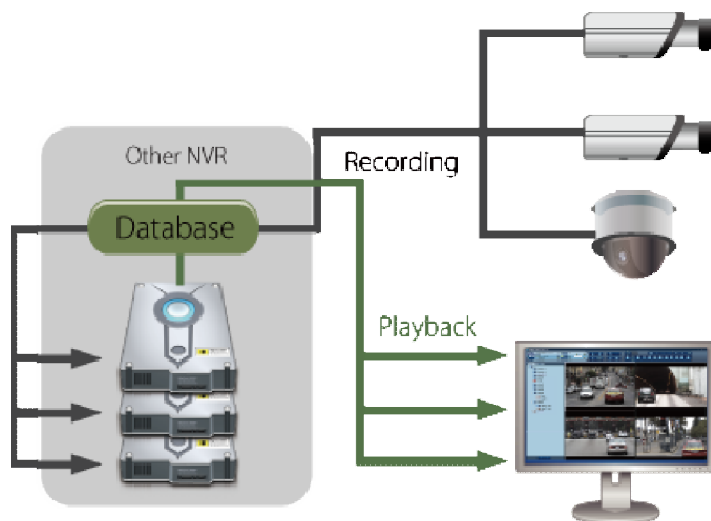




# Time Sector Engine v.s. Database Design

Database / Nuuo. Milestone etc  
Cause Bottleneck

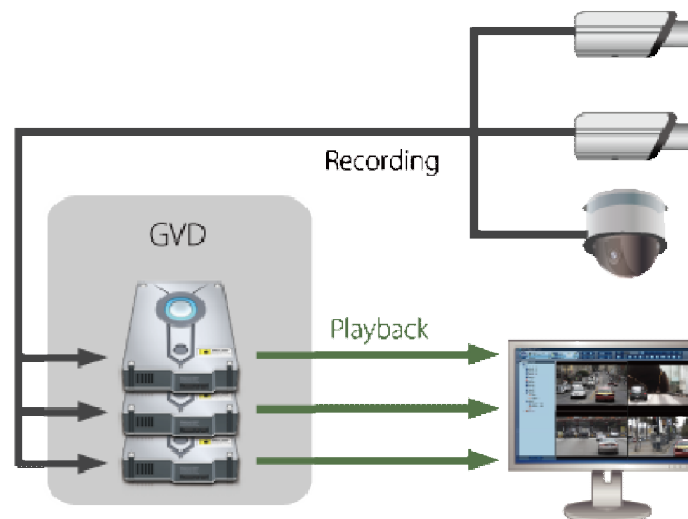
- ❖ **Centralized architecture** becomes potential failure point
- ❖ Recording data go through database before writing to HDD
- ❖ Retrieving video from HDD through database before playback



Database - Video retrieves from HDD through Index

TSE / GVD  
Retrieves Video in Real time

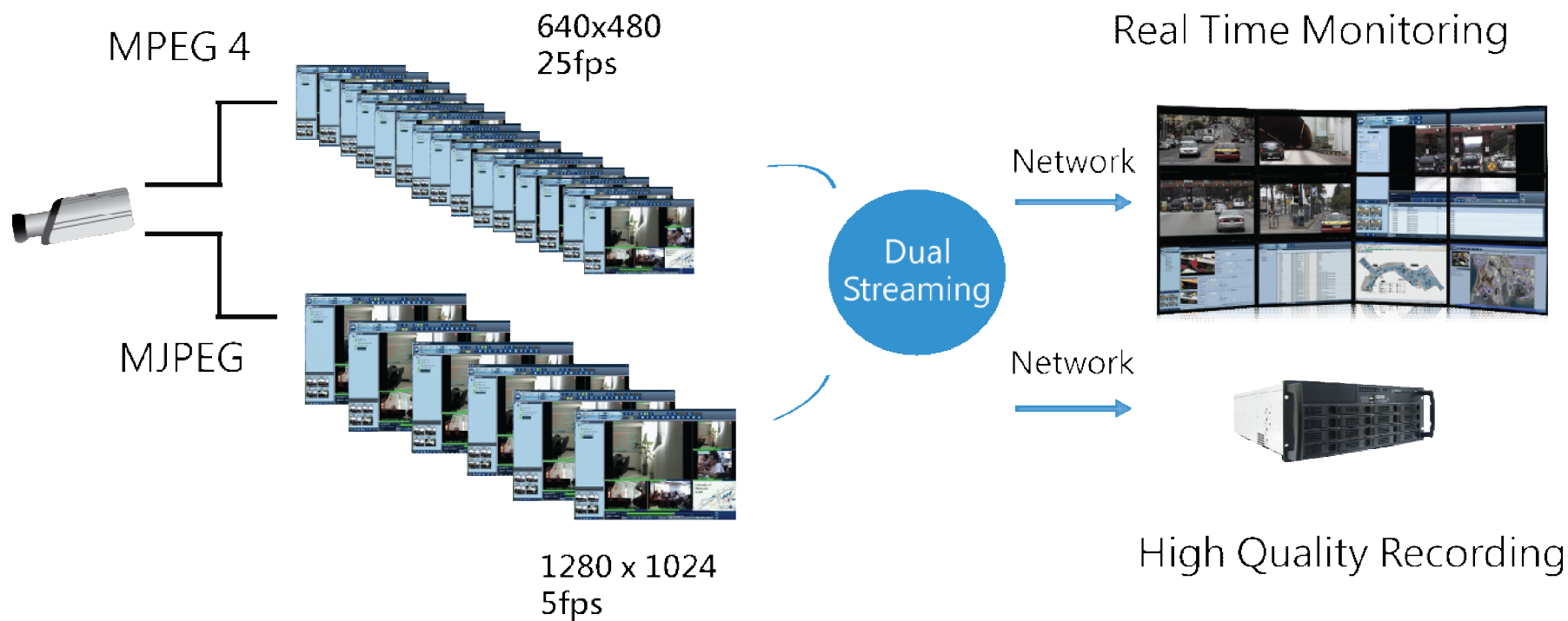
- ❖ Robust architecture for high performance through-put
- ❖ Recording data **go directly to specific HDD**
- ❖ Video directly retrieved from HDD for playback
- ❖ Each IP-Cam and HDD work as independent and directly



TSE - Video retrieves directly from pre allocated HDD



# Dual Codec Design



- Best design for **network bandwidth management** for large IP installation
- Maximize both NVR storage and network bandwidth utilization



# ROI & ePTZ

- ▶ Picture in picture concept
- ▶ Create **unlimited** sub-regions as independent videos
- ▶ Doesn't create extra loading to system
- ▶ **Virtual PTZ** in each sub-region






# Sub-channel Design

- Record multiple megapixel video streams, independently of each other with sub-channel recording
- Configurable **video codec** and **quality** for Sub-channels
- Possible **50~75%** storage saving



The screenshot shows a 'Configuration Page' for a video system. It features a main video preview window and three sub-channel configuration panels below it. The top panel is for 'Channel 4' (ID: 40) and has a red box around its preview window with a blue callout bubble containing '1 fps'. The middle panel is for 'Sub Channel 1' and has a red box around its preview window with a blue callout bubble containing '15 fps'. The bottom panel is for 'Sub Channel 2' and is currently disabled. The interface includes various settings such as Video Size, Video Format, Full Field of View (FOV), Frame Rate, Quality, and Recording options (Pre and Post Recording).

 Case Study





# USA Homeland Project

“ Security Tech & Design ” , June, 2008





# San Francisco Seaport (Richmond) Q2/08

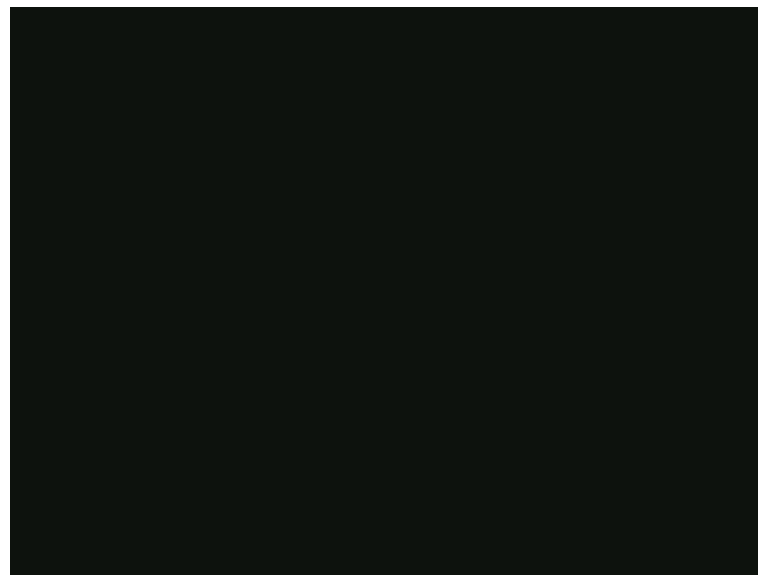


## ❖ Problem & Issue:

- Richmond is one of major ports in San Francisco bay – the area is too big to patrol
- Critical and sensitive areas for **homeland security** concerns
- Need short deployment time with long video recording time

## ❖ Solution & Answer:

- GVD HD NVR provides months of stable recording with **120 AXIS IP cameras** via BelAir wireless technology
- Promptly capture any suspicious activities day and night by integrating **ObjectVideo** analytic video system







# Ford Headquarters USA

Q1/08



## ❖ Problem & Issue:

- Worldwide facilities with limited security management capabilities
- Building **IP based global control center** to respond all security alerts

## ❖ Solution & Answer:

- GVD C Series products integrate Pelco and Panasonic DVRs, GE CASI ACS, Honeywell Silent Knight Alarm system to a browser-based management system
- Ford HQ Global Communication Center can **access and respond** to all above systems worldwide from Detroit, Michigan





# 2009 Selected Projects

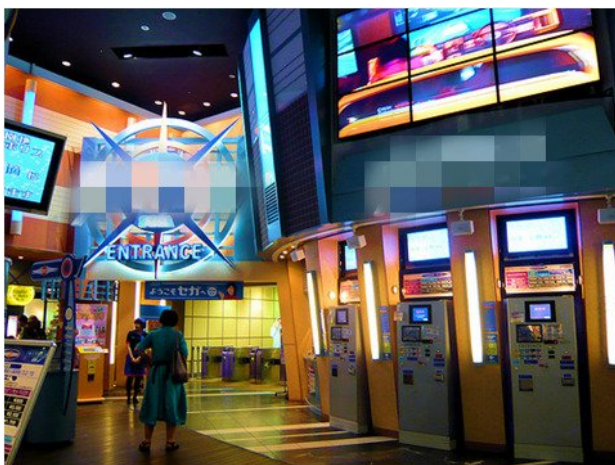
Casino , Europe / May, 2009



Multiple sites retail, Belgium/ June,2009



Arcade Chain Store , Japan / Jan,2009



Malaysia Highway, Malaysia / Sep,2009



❖ Magnify Series HD NVR

❖ M series

- M600
- M300
- M200
- M100





# Video Quality V.S. Video Data

D1

Name	x (width)	y (height)	Pixels (x1 Million)	Aspect Ratio	Percentage of <i>difference</i> in pixels								Widescreen Version	Typical sizes
					VGA	SVGA	XGA	XGA+	SXGA	SXGA+	UXGA	QXGA		
VGA	640	480	0.31	1.33	0%	-36%	-61%	-69%	-77%	-79%	-84%	-90%	WVGA	
SVGA	800	600	0.48	1.33	56%	0%	-39%	-52%	-63%	-67%	-75%	-85%		
XGA	1024	768	0.79	1.33	156%	64%	0%	-21%	-40%	-47%	-59%	-75%	WXGA	15"/ 38cm
<b>10 X</b>				1.33	224%	107%	27%	0%	-24%	-32%	-48%	-68%	WXGA+	17"/ 43cm
SXGA	1280	1024	1.31	1.25	327%	173%	67%	32%	0%	-11%	-32%	-58%	WSXGA	17-19"/ 43-48cm
SXGA+	1400	1050	1.47	1.33	379%	206%	87%	48%	12%	0%	-23%	-53%	WSXGA+	
UXGA	1600	1200	1.92	1.33	525%	300%	144%	93%	46%	31%	0%	-39%	WUXGA	20"/ 51cm
QXGA	2048	1536	3.15	1.33	924%	555%	300%	216%	140%	114%	64%	0%	WQXGA	30"/ 76cm

3Mb





# M600 Enterprise NVR

- Design for **Enterprise-Class** mission critical application
- High reliability and availability
- Vertical Market: Government , Homeland Security. Transportation
- Redundant power supply
- Support hot swappable HDD
- Windows XP, Vista , **XP embedded**



Model	M610	M620
● CPU	Intel Core 2 Quad Q6600(2.4 G)	Intel Core 2 Quad Q6600(2.4 G)
● Memory	2048MB	2048MB
● Storage	M610-0750: 2.2 TB M610-1000: 3.0 TB	M620-0750: 6.0 TB M620-1000: 8.0 TB
● Hot Swap HD Tray	3	8
● HD Type	SATA2	SATA2
● Image Resolution Support	CIF/ 2CIF/ D1/ 1.3M~8M	CIF/ 2CIF/ D1/ 1.3M~8M
● IP Inputs Support	Up to 32	Up to 32
● Ethernet Port	1000Mb/s x 1	1000Mb/s x 1
● Display Port	D-SUB x 1	D-SUB x 1
● DVD Writer	Slim DVD-/RW	Slim DVD-/RW
● RAID Level	0, 1, 5, 6, +1	0, 1, 5, 6, +1
● Form Factor	1U	2U
● Operating System	Windows XP	Windows XP
● Power Supply	Single Power Supply/400W	Redundant Power Supply/500W 2 x 500W, independent switching
● Dimension	16.9"(W) X 22.4"(D) X 1.7"(H)	16.9"(W) X 26.0"(D) X 3.5"(H)
Model	M630	M640
● CPU	Intel Core 2 Quad Q9300(2.5 G)	Intel Core 2 Quad Q9300(2.5 G)
● Memory	4096MB	4096MB
● Storage	M630-0750: 9.0 TB M630-1000: 12.0 TB	M640-0750: 12.0 TB M640-1000: 16.0 TB
● Hot Swap HD Tray	12	16
● HD Type	SATA2	SATA2
● Image Resolution Support	CIF/ 2CIF/ D1/ 1.3M~8M	CIF/ 2CIF/ D1/ 1.3M~8M
● IP Inputs Support	Up to 48	Up to 64
● Ethernet Port	1000Mb/s x 1	1000Mb/s x 1
● Display Port	DVI x 2	DVI x 2
● DVD Writer	Slim DVD-/RW	Slim DVD-/RW
● RAID Level	0, 1, 5, 6, +1	0, 1, 5, 6, +1
● Form Factor	1U	1U
● Operating System	Windows XP	Windows XP
● Power Supply	Redundant Power Supply/650W 3 x 350W, independent switching	Redundant Power Supply/760W 3 x 420W, independent switching
● Dimension	16.9"(W) X 26.0"(D) X 5.2"(H)	16.9"(W) X 26.0"(D) X 6.9"(H)



# M300 Super Standalone

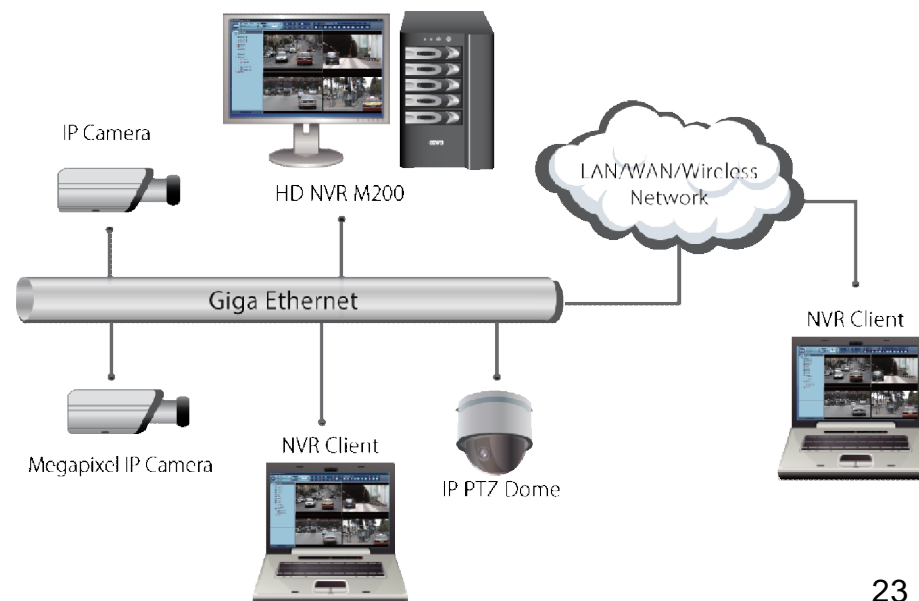
- Supports **Triplet Operation**
- Support **Dual Monitor** for megapixel cameras
- Vertical Market: Police. Factory.  
Government. Hypermarket
- Prebuilt **24** IP camera license free of charge,  
with 3HDDs support
- Vista OS Platform
- XP Embedded





# M200 NVR mini

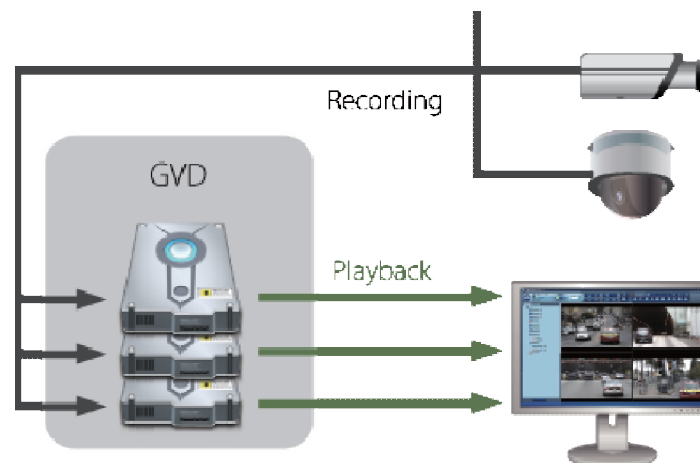
- NVR mini design for **long-term recording** storage
- Best NVR for **D1~1.3 megapixel** installation
- All-in-One Standalone full function HD NVR
- Vertical Markets: Retail, Office building, Campus, Multi-sites
- Prebuilt **9 & 18 IP** camera license without extra charge
- Easy plug-in with HDD bay design
- Reliable and robust **XP embedded OS on DOM**





# M100 NVR mini

- Affordable and Reliable IP Solution
- Best NVR for **D1 ~ 1.3 megapixel** installation
- All-in-One Standalone full function HD NVR
- Vertical Markets: Retail. Office building.  
Multi-site
- Prebuilt **6x IP camera license** without extra charge
- Reliable and robust XP **embedded OS on DOM**



TSE - Video retrieves directly from pre-allocated HDD





# Upcoming Products

## M800 Series: NAS Server Q4,2009

- NAS server for storage expansion
- **Transcoding** capability to further extend storage space
- **Per-Channel design** to maximize flexibility
- Robust industry h/w design for 24/7 operation
- Hotswap HDD, **RAID-0~5**, dual power

## M900 Series: Failover Server Q4, 2009

- **N+1 solution** to ensure no video lost
- Design for mission critical applications
- Hotswap HDD, **RAID-0~5**, dual power



## Redundant Server

Best Redundant and Failover Solutions for Megapixel system

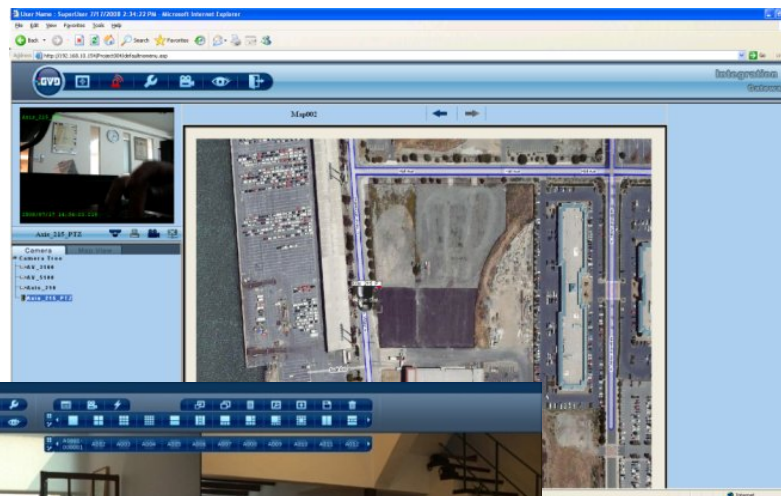
Model	M930	M940
● CPU	Intel Core 2 Quad Q9300(2.5 G)	Intel Core 2 Quad Q9300(2.5 G)
● Memory	4096MB	4096MB
● Storage	M930-0750: 9.0 TB M930-1000: 12.0 TB	M940-0750: 12.0 TB M940-1000: 16.0 TB
● Hot Swap HD Tray	12	16
● HD Type	SATA2	SATA2
● Image Resolution Support	CIF/ 2CIF/ D1/ 1.3M~8M	CIF/ 2CIF/ D1/ 1.3M~8M
● IP Inputs Support	Up to 48	Up to 64
● Ethernet Port	1000Mb/s x 1	1000Mb/s x 1
● Display Port	DVI x 2	DVI x 2
● DVD Writer	Slim DVD-/+RW	Slim DVD-/+RW
● RAID Level	0, 1, 5, 0+1	0, 1, 5, 0+1
● Form Factor	3U	4U
● Operating System	Windows XP	Windows XP
● Power Supply	Redundant Power Supply/650W 3 x 350W, independent switching	Redundant Power Supply/760W 3 x 420W, independent switching
● Dimension	16.9"(W) X 26.0"(D) X 5.2"(H)	16.9"(W) X 26.0"(D) X 6.9"(H)



## R2.3 New Features (Oct 20, 2009)

### Key feature :

- Multi-NVR synchronized playback
- Video playback looping
- Multi-user privilege setup, User Grouping
- Up to 64x video views of pattern
- Smart video search –  
missing object and foreign object



### More cameras support:

- Samsung megapixel
- Panasonic BB
- Sony G5 megapixel
- Pelco Sarix megapixel
- Hikvision megapixel
- Pixord H.264 megapixel
- Appro D1 ~ megapixel
- AXIS H.264 video server





# IP cameras Support List



# Empower Series CMS WorkStation





# CMS Control WorkStation

- Powerful CMS for Multiple NVRs + IP cam configuration via network
- Each Workstation supports **2-4** monitors to easily construct 2x2, 3x3, 4x4 large screen **digital CCTV wall**
- Optional USB based Switching Keyboard (*K200*) to Any-Monitor, Any-NVR control
- **Web Map** support, easy to plug in: Yahoo or Google maps. (HTML format)





# K200 Switching Keyboard

- **USB interface** connects to either NVR or CMS
- One single keyboard could switch any cameras to any monitors in the network
- Multiple keyboard could control cameras/monitor independently

## Matrix Switch Control

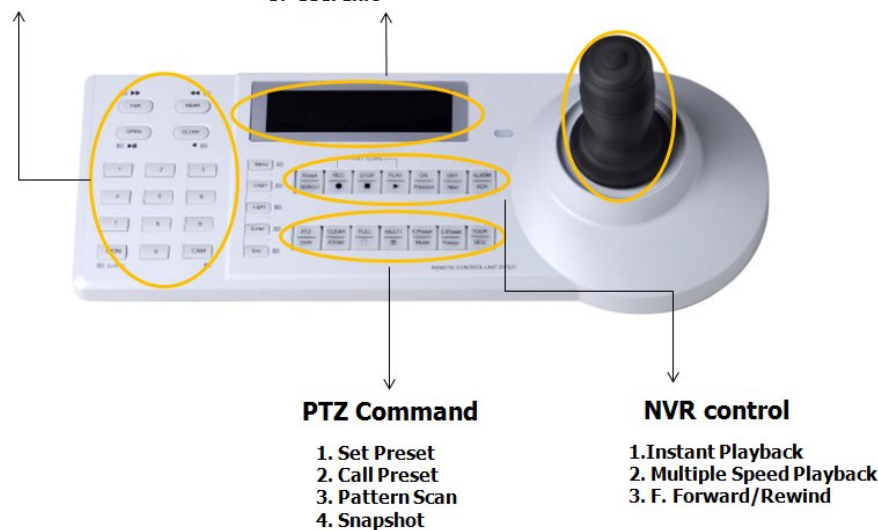
1. Display ID
2. Camera ID
3. NVR ID

## System Info

1. Command Status
2. Coordinate Position
3. User Info

## PTZ Control

1. Up, Down, Left, Right
2. Zoom in, Zoom Out



# Connect Series Integration Gateway





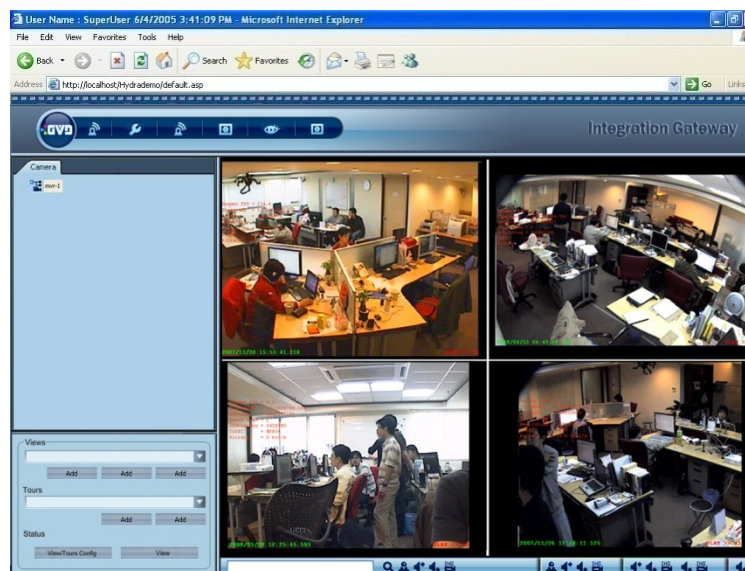
# C Series Integration Gateway



GVD VideoSm@rt is a web-based platform that seamlessly integrates various security systems, including digital video, access control, secondary fire annunciation, intrusion detection, intercom, ModBus, and OPC protocol subsystems, into a single full-function security system. All security subsystems are accessible through an Internet browser with rich, map-based graphical user interface provided by this powerful security software product.

## Key Features :

- **Browser-based** control for easy operations
- Seamless integration for **ACS, Fire, Alarm, DVR, IP Cameras**
- Support: GE, Tyco, Sony, Pelco and other products from well-known manufacturers
- **Centralized alarm management** for various third party security subsystems

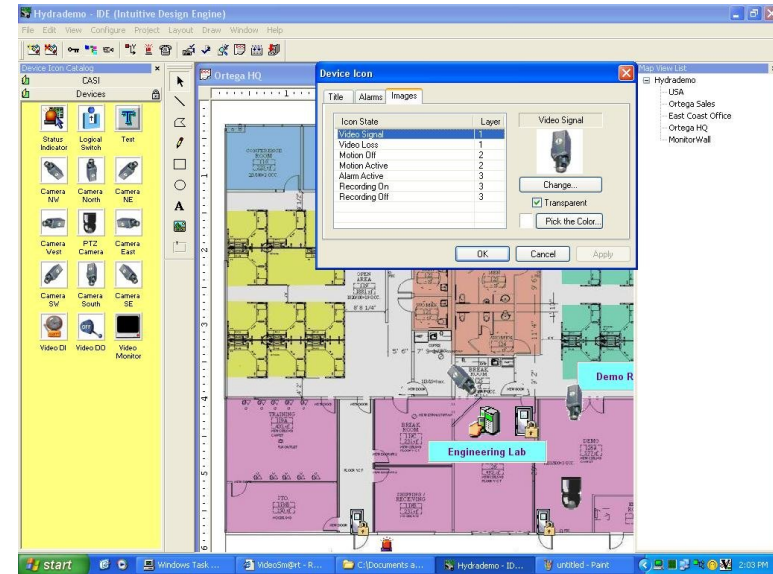






# C Series-Flexible and Scalable

- **True open integration platform** - reduces overall cost of implementation and maintenance
- **Object-oriented** project design through the Intuitive Design Engine (IDE) – creates a complete project by drag-and-drop operations without programming
- Assists integrators to build a complex security project quickly





# C500 Integration Device List

INT	SmartNode for Object Video intelligent video systems integration
ACS	Sm@rtNode Interface SoftwareHouse: C-Cure800 requires SWH # CC800RTAPI-RTL
ACS	Sm@rtNode Interface Cast: Picture Perfect (check with OIS on server software requirements)
ACS	Sm@rtNode Interface Identocard
ACS	Sm@rtNode Interface Radionics G series
BA	Sm@rtNode Interface Modbus Protocol
PTZ	Sm@rtNode Interface Tyco Video: Speed Dome II (via VM16)
PTZ	Sm@rtNode Interface Pelco: Spectra II (D Protocol)
PTZ	Sm@rtNode Interface Kalatel: Kalatel Cyberdome
PTZ	Sm@rtNode Interface SONY: EVI-D30
Switch	Sm@rtNode Interface Tyco Video: VM96
Switch	Sm@rtNode Interface American Dynamics: MegaPower 48
Switch	Sm@rtNode Interface American Dynamics: AD168
Switch	Sm@rtNode Interface American Dynamics: AD1024
Switch	Sm@rtNode Interface American Dynamics: AD2050
Switch	Sm@rtNode Interface American Dynamics: AD2052
Switch	Sm@rtNode Interface American Dynamics: AD2150
Switch	Sm@rtNode Interface Pelco: 6700 Series Switcher ASCII port)
Switch	Sm@rtNode Interface Pelco: 9760 Series Switcher (via 9760 data translator)
Switch	Sm@rtNode Interface Pelco: 9740 Series Switcher (via 9760 data translator)
Switch	Sm@rtNode Interface Pelco: 9502 Series Switcher (via ASCII port)
Switch	Sm@rtNode Interface Pelco: 8500 Series Switcher (via 8500 data translator)
Switch	Sm@rtNode Interface Vicon: Nova V1466
Switch	Sm@rtNode Interface Philips/Bosch: LTC 8000 series
Switch	Sm@rtNode Interface Extron: 3200, 6400 series

DVR	Sm@rtNode Interface American Dynamics: Intellex Digital Video System
DVR	Sm@rtNode Expander Pelco: DX7000
DVR	Sm@rtNode Expander Pelco: DX8000
DVR	Sm@rtNode Expander Pelco: DX8100
DVR	Sm@rtNode Expander Pelco: DX4000
DVR	Sm@rtNode Expander Pelco: DX4500/4600
DVR	Sm@rtNode Interface Integral: DVX 16000
DVR	Sm@rtNode Interface Saliient: iView
DVR	Sm@rtNode Interface Loronix: 2.x, 4.x
DVR	Sm@rtNode Interface GE DVR: DVMRe CT/GT II
DVR	Sm@rtNode Interface Panasonic: WJ-HD316a
DVR	Sm@rtNode Interface Panasonic 300
DVR	Sm@rtNode Interface Panasonic 500
DVR	Sm@rtNode Interface Vicon: ViconNet 3.0
DVR	Sm@rtNode Interface Endura
DVR	Sm@rtNode Interface Dedicated Micros: NetVu
DVR	Sm@rtNode Interface SmartSight
DVR	Sm@rtNode Interface Insight VideoNet
Intercom	Sm@rtNode Interface Zenitel: Alphacom
Burg	Sm@rtNode Interface Radionics: D7000/D9000 Panel Interface
Burg	Sm@rtNode Interface Radionics: DACR 6500/6600 - 100 Accounts
Burg	Sm@rtNode Interface SurGard Receiver (100 accounts)
Burg	Sm@rtNode Interface SurGard License Fee Upgrade - 100 Accounts
Burg	Sm@rtNode Interface Silent Knight 9800
Security	Rainbow Technology: USB iKey Security Dongle

## Comparison Chart





# Product Comparison Chart

$E=mc^2$	HD NVR Enterprise(4U) M640	HD NVR Enterprise(3U) M630	HD NVR Enterprise(2U) M620	HD NVR Enterprise(1U) M610	HD NVR M310	Intergration Gateway C500	Control Workstation E100
● CPU	Intel Core2 Quad Q9300	Intel Core2 Quad Q9300	Intel Core2 Quad Q6600	Intel Core2 Quad Q6600	Intel Core2 Quad Q9300	Intel Core2 Duo E4600	Intel Core2 Quad Q9300
● Memory	DDR2-800 4G	DDR2-800 4G	DDR2-800 4G	DDR2-667 4G	DDR2-800 4G	DDR2-667 4G	DDR2-800 4G
● Internal HDD(For OS)	80G SATA2	80G SATA2	80G SATA2	80G SATA2	80G SATA2	80G SATA2	250G SATA2
● Internal HDD Tray(For Storage)	16(HotSwap)	12(HotSwap)	8(HotSwap)	3(HotSwap)	3	X	X
● DVD-Writer	Yes (Slim)	Yes (Slim)	Yes (Slim)	Yes (Slim)	Yes (Slim)	Yes (Slim)	Yes (Normal)
● OnBoard Display	X	X	D-Sub	D-Sub	HDMI/DVI+D-Sub	D-Sub	X
● External Display Card	HDMI/DVI+D-Sub	HDMI/DVI+D-Sub	X	X	X	X	HDMI/DVI+D-Sub
● OnBoard LAN	Gigabit x 2	Gigabit x 2	Gigabit x 1	Gigabit x 1	Gigabit x 1	Gigabit x 2	Gigabit x 1
● RAID Card	Yes	Yes	Yes	X	X	X	X
● OnBoard SATA2(3.0 Gb/s)	6	6	4	4	4	2	4
● RS232 Serial Port	1(Optional)	1(Optional)	1	1	1(Optional)	2	1(Optional)
● Keyboard & Mouse	X	X	X	X	X	X	X
● Dimension(DxWxH)	660 x 430 x 176 mm	660 x 430 x 132 mm	660 x 430 x 88 mm	569 x 430 x 43.5 mm	395 x 95 x 325 mm	306 x 370 x 43.5 mm	378 x 435 x 94 mm
● PowerSupply	2+1 Redundant, 760W	2+1 Redundant, 650W	1+1 Redundant, 500W	Single, 350W	Single, 300W	Single, 180W	Single, 300W
● S/W Features	<ul style="list-style-type: none"> <li>-Pre-built 64 x IP Camera license, for D1, 1.3M~8M</li> <li>-Complete fail-over solution provided by the redundant server</li> <li>-Unique Time Sector-based Engine to provide the best video performance</li> <li>-Support live, recording and playback triple video function simultaneously on multiple megapixel cameras</li> </ul>	<ul style="list-style-type: none"> <li>-Pre-built 48 x IP Camera license, for D1, 1.3M~8M</li> <li>-Complete fail-over solution provided by the redundant server</li> <li>-Unique Time Sector-based Engine to provide the best video performance</li> <li>-Support live, recording and playback triple video function simultaneously on multiple megapixel cameras</li> </ul>	<ul style="list-style-type: none"> <li>-Pre-built 32 x IP Camera license, for D1, 1.3M~8M</li> <li>-Complete fail-over solution provided by the redundant server</li> <li>-Unique Time Sector-based Engine to provide the best video performance</li> <li>-Support live, recording and playback triple video function simultaneously on multiple megapixel cameras</li> </ul>	<ul style="list-style-type: none"> <li>-Pre-built 32 x IP Camera license, for D1, 1.3M~8M</li> <li>-Complete fail-over solution provided by the redundant server</li> <li>-Unique Time Sector-based Engine to provide the best video performance</li> <li>-Support live, recording and playback triple video function simultaneously on multiple megapixel cameras</li> </ul>	<ul style="list-style-type: none"> <li>-Pre-built 24 x IP Camera license, for D1, 1.3M~5M</li> <li>-Unique Time Sector-based Engine to provide the best video performance</li> <li>-Support live, recording and playback triple video function simultaneously on multiple megapixel cameras</li> </ul>	<ul style="list-style-type: none"> <li>-Pre-built 128 Camera license, for GVD HD-NVR</li> <li>-Web-based control for easy operations</li> <li>-Centralized alarm management for various third party security subsystems</li> <li>-Seamless integration between video systems, access control systems and other third party subsystems</li> </ul>	<ul style="list-style-type: none"> <li>-Support up to 1024 IP cameras</li> <li>-Alarm, live display and playback video support</li> <li>-HTML map support</li> <li>-Support professional keyboard control</li> </ul>
● Hardware Warranty	2 Years	2 Years	2 Years	2 Years	1 Years	2 Years	2 Years

## ❖ Benchmark and Testimonials

- Arecont Vision
- IQinVision
- Vivotek





# M100.M200 Benchmark

	IP camera Model	Video Recording Capability			Video Display Capability		
	Resolution	Bit Rate	Frame Rate	Channel Recording	Bit Rate	Frame Rate	Channel Displaying
M100 NVR Mini(6CH)	D1	2 Mb	30 fps	6	2Mb	30 fps	4
	1.3 M	6Mb	30 fps	6	6Mb	30 fps	1
M200 NVR Mini(18CH)	D1	2Mb	30 fps	18	2Mb	30 fps	12
	1.3 M	6Mb	30 fps	18	4Mb	25 fps	4



# M300

## Excellent in Megapixel Recording

	IP Camera Model		Video Recording Capability		
	Resolution	Codec	Bit Rate	Frame Rate	Channel Recording
<b>M300 HD NVR</b>	D1	MPEG4	2Mb	30fps	24
			3Mb	30fps	18
	1.3M 1280x1024	MJPEG	5Mb	3fps	18
			10Mb	10fps	9
		H.264	20Mb	25fps	6
			6Mb	30fps	18
	2.0M 1600x1200	MJPEG	10Mb	27fps	9
			12Mb	7fps	6
		H.264	24Mb	15fps	6
			6Mb	22fps	18
	3.0M 2048x1536	MJPEG	10Mb	21fps	9
			3Mb	1fps	24
H.264		20Mb	7fps	6	
		10Mb	1fps	9	
5.0M 2592x1944	MJPEG	20Mb	3fps	6	
		10Mb	1fps	9	





# E100 Video Process Capability

	IP Camera Model		Vide Decode Cabability		
	Resolution	Codec	Bit Rate	Frame Rate Decode	Channel Decode
E100 Control Workstation	D1 720x480	MPEG4	2Mb	15fps	32
			2Mb	20fps	32
			3Mb	30fps	22
	1.3M 1280x1024	MJPEG	10Mb	7fps	20
			20Mb	15fps	9
			25Mb	25fps	6
		H.264	6Mb	30fps	9
			10Mb	27fps	7
	2.0M 1600x1200	MJPEG	20Mb	7fps	12
			30Mb	15fps	8
		H.264	6Mb	22fps	7
			10Mb	19fps	7
	3.0M 2048x1536	MJPEG	3Mb	1fps	32
			10Mb	3fps	21
			20Mb	7fps	10
5.0M 2592x1944	MJPEG	10Mb	1fps	24	
		39Mb	7fps	4	







# Arecont Vision

## M630 Benchmark Test in Arecont Glendale, CA

- Tested 64 Arecont mega cams on 1x M630 HD NVR systems
- Two days stress test
- **64x mega cams:** recording, display, playback operations
- Please refer to Arecont homepage



**Arecont Vision Cooperates With Genius Vision Digital  
For Seamless H.264 Megapixel Camera And NVR Integration.**



*(Arecont Vision's H.264 megapixel cameras tested on GVD's HD NVR)*

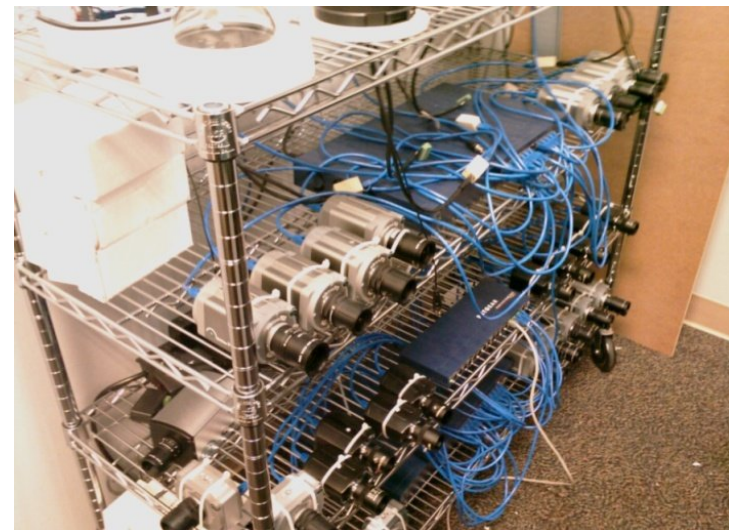
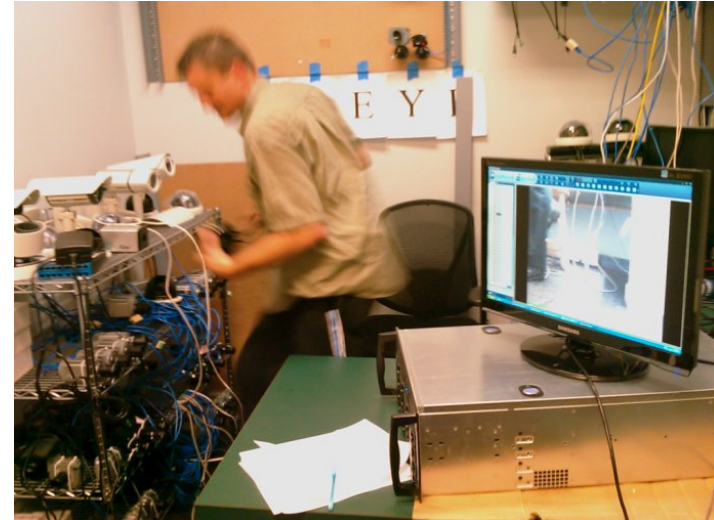
Glendale, CA (May 11, 2009) – Arecont Vision, the industry leader in megapixel IP camera technology, announces their collaborative effort with Genius Vision Digital, Inc. (GVD). The joint effort confirms interoperability of Arecont Vision's H.264 megapixel cameras, offering a highly efficient megapixel surveillance solution on GVD's popular M630-1000 Enterprise Level HD NVR platform.



# IQinVision

## M640 Benchmark Test in IQinVision Lancaster, PA

- Tested 64 IQEye mega cams on 1x M640 HD NVR systems
- 3x days stress test
- **64x 3~5M megapixel cams:** recording, display, playback, operations
- One of top ranking NVR for IQEye





# Vivotek



[About Us](#) [Products](#) [Support](#) [Downloads](#) [Events](#) [Press Room](#) [Where to Buy](#) [Alliance](#)

[News](#) [E-newsletters](#)



[News - 2009.02.23.](#)

## VIVOTEK in Alliance with GVD

VIVOTEK is pleased to announce its new partnership with GVD, a Taiwan-based IP surveillance system developer. The partnership launched with the addition of support for several VIVOTEK 7-series models, namely IP7138, PZ7151 and SD7151, in GVD's network video recorders. Supported functions of the three models include live viewing, recording, playback, multi-streaming, PTZ control and motion detection, with more expected to come in the future. Through the integration, VIVOTEK customers will be able to store and manage video data with enhanced convenience and flexibility.

## News - 2009.02.23.

### VIVOTEK in Alliance with GVD

VIVOTEK is pleased to announce its new partnership with GVD, a Taiwan-based IP surveillance system developer. The partnership launched with the addition of support for several VIVOTEK 7-series models, namely IP7138, PZ7151 and SD7151, in GVD's network video recorders. Supported functions of the three models include live viewing, recording, playback, multi-streaming, PTZ control and motion detection, with more expected to come in the future. Through the integration, VIVOTEK customers will be able to store and manage video data with enhanced convenience and flexibility.

"With NVRs growing in popularity, cooperating with GVD will undoubtedly give us an edge in the video storage industry and further sharpen our competitiveness. The addition of support for the three models is just a beginning. We will make every effort to construct a closer and long-term relationship with GVD, so as to bring our customers more powerful and customizable video management solution." said Owen Chen, Chairman of VIVOTEK.

#### About Genius Vision Digital

Genius Vision Digital (GVD) is a company based in Taipei with cutting edge technologies. GVD brings the next generation of IP surveillance systems for the upcoming "Full High Definition" age by providing robust video storage and management systems for the mission critical applications in Banking, Hospital, Retailing, Government, and Gaming etc.

# Thank you

## Empowering Megapixel

The Comprehensive IP Surveillance  
Systems for Enterprise

