

HomeTek Technology Inc.

ADDRESS: No. 67-9, Shir Men Road, Tu Cheng City,
Taipei Hsien, Taiwan

PHONE : 886-2-22608375 FAX : 886-2-22748013

E - mail : hometek@ms15.hinet.net

FCC TEST REPORT FOR

APPLICANT : SMART CABLING & TRANSMISSION CORP.
ADDRESS : 10F, No. 493, Chung-Cheng Rd.,
Hsin Tien City, Taipei 231, Taiwan, R. O. C.
EUT : CAT5 VGA Transmission
MODEL NO. : TXA1XXVGAT, VD10XXT



Accredited by the National Voluntary Laboratory Accreditation Program
for the specific scope of accreditation under Lab Code 200331-0

MEASUREMENT PROCEDURE USED

FCC RULES AND CISPR 22-1997 AND FCC / ANSI C63.4-2003

PREPARED BY :

HomeTek Technology Inc.

No. 67-9, Shir Men Road, Tu Cheng City,

Taipei Hsien. Taiwan

Report # : FD5F007



TABLE OF CONTENTS 2

CERTIFICATION 3

GENERAL INFORMATION..... 4

MODIFICATION LIST..... 6

CONDUCTED POWER LINE TEST 7

 1 TEST INSTRUMENTS & FACILITIES 7

 2 TEST PROCEDURE 7

 3 TEST SETUP 8

 4 CONFIGURATION OF THE EUT10

 5 EUT OPERATING CONDITION16

 6 LIMIT OF CONDUCTED POWER LINE EMISSION CLASS B16

 7 RESULT OF CONDUCTED POWER LINE TEST16

 8 CONDUCTED POWER LINE TEST DATA (PAGE 1)17

 9 CONDUCTED POWER LINE TEST DATA (PAGE 2)18

 10 CONDUCTED POWER LINE TEST DATA (PAGE 3)19

 11 CONDUCTED POWER LINE TEST DATA (PAGE 4)20

RADIATED EMISSION TEST21

 1 TEST INSTRUMENTS & FACILITIES21

 2 TEST PROCEDURE22

 3 TEST SETUP22

 4 CONFIGURATION OF THE EUT24

 5 EUT OPERATING CONDITION24

 6 LIMIT OF RADIATED EMISSION CLASS B24

 7 RESULT OF RADIATED EMISSION TEST25

 8 RADIATED EMISSION TEST DATA (PAGE 1)26

 9 RADIATED EMISSION TEST DATA (PAGE 2)27

SAMPLE OF FCC DOC LABEL 1.....28

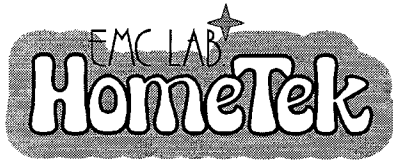
SAMPLE OF FCC DOC LABEL 2.....28

APPENDIX A

PHOTOS OF TEST CONFIGURATION

APPENDIX B

PHOTOS OF EUT



HomeTek Technology Inc.

ADDRESS: No. 67-9, Shir Men Road, Tu Cheng City, Taipei Hsien, Taiwan
PHONE : 886-2-22608375 FAX : 886-2-22748013
E - mail : hometek@ms15.hinet.net



CERTIFICATION

for

FCC Part 15, Subpart B Class B

APPLICANT : SMART CABLING & TRANSMISSION CORP.
ADDRESS : 10F, No. 493, Chung-Cheng Rd., Hsin Tien City, Taipei 231, Taiwan, R. O. C.
Receipt Date : 06/13/2006 Final Test Date: 06/19/2006
EUT : CAT5 VGA Transmission
MODEL NO. : TXA1XXVGAT, VD10XXT

MEASUREMENT PROCEDURE USED :

PART 15 SUBPART B FCC RULES AND CISPR 22-1997 AND FCC / ANSI C63.4-2003

TEST PROCEDURE AND DATA ARE TRACEABLE TO NIST/USA, TL or NML/TAIWAN.

- THE MAXIMUM EMISSION LEVELS WERE COMPARED TO THE CISPR 22 CLASS B LIMITS BOTH RADIATED AND CONDUCTED EMISSION.
THE ABOVE DEVICE WAS TESTED BY HOMETEK TECHNOLOGY INC. TO SHOWS THE MAXIMUM EMISSION LEVEL FROM THE DEVICE.
THIS TEST RESULTS OF THIS REPORT APPLIES TO ABOVE TESTED SAMPLE ONLY.
THIS TEST REPORT SHALL NOT BE REPRODUCE IN PART WITHOUT WRITTEN APPROVAL OF HOMETEK TECHNOLOGY INC.
THE REPORT MUST NOT BE USED BY THE CLIENT TO CLAIM PRODUCT ENDORSEMENT BY NVLAP OR ANY AGENCY OF THE U. S. GOVERNMENT.
THE TEST RESULTS ARE TRACEABLE TO THE NATIONAL OR INTERNATIONAL STANDARD.

APPROVED BY : [Signature] 6/24/2006

ALAIN LIN / Supervisor

GENERAL INFORMATION

- 1 APPLICANT : SMART CABLING & TRANSMISSION CORP.
- 2 ADDRESS : 10F, No. 493, Chung-Cheng Rd.,
Hsin Tien City, Taipei 231, Taiwan, R. O. C.
- 3 MANUFACTURER : SMART CABLING & TRANSMISSION CORP.
- 4 ADDRESS : 10F, No. 493, Chung-Cheng Rd.,
Hsin Tien City, Taipei 231, Taiwan, R. O. C.
- 5 DESCRIPTION OF EUT :
- EUT : CAT5 VGA Transmission
- FCC ID : N/A
- Model Number : TXA1XXVGAT, VD10XXT
- Serial # : N/A

- 5.1 ● The difference between series of models TXA1XXVGAT are as shown below:
- (1) The first “X” represent different packing box.
 - (2) The second and third “X” represent different system input.
- The difference between series of models VD10XXT are as shown below:
- (1) The first and second “X” represent different system input.

The PCB layout is similar. The worst case of EMI test data were shown in this test report.

6 FEATURES OF EUT :

Please refer to user manual or product specification.

7 TEST MODE :

The EUT were investigated with three resolution modes shown as below :

- (1) 1600 x 1200 75Hz Mode;
- (2) 1280 x 1024 75Hz Mode;
- (3) 800 x 600 75Hz Mode

The test mode of (2) 1280 x 1024 75Hz Mode is worst case, and the final test data were shown in this test report.



MODIFICATION LIST

THE FOLLOWING ACCESSORIES WERE ADDED TO THE EUT DURING TESTING :

NO MODIFICATION BY HOMETEK TECHNOLOGY INC.

CONDUCTED POWER LINE TEST

1 TEST INSTRUMENTS & FACILITIES

The following test Instruments was used during the conducted test :

| Item | Instruments/ Facilities | Specification | Manufacturer | Model # S/N | Date Of Cal. |
|------|----------------------------|---------------------------------|--------------------|-----------------------------|-----------------|
| 1 | EMI Receiver | 9KHz ~ 30MHz | ROHDE & SCHWARZ | ESHS 30 844827/007 | FEB/2006 |
| 2 | LISN (for EUT) | 50Ω/50uH/100A 150KHz ~ 30MHz | SCHWARZ BECK | NNLK 8121 8121370 | OCT/2005 |
| 3 | LISN (for Support Unit) | 50Ω/50uH/10A 9KHz ~ 30MHz | ROHDE & SCHWARZ | ESH3-Z5 846128/007 | MAR/2006 |
| 4 | Terminator | 50Ω | N/A | N/A | NOV/2005 |
| 5 | Attenuation | 50Ω/10dB | Mini-Circuit | NAT-10 AT-002 | JUL/2005 |
| 6 | Cable | 5.4m | SUHNER | RG-223 CON2-002 | AUG/2005 |
| 7 | ESXS-K1 (software) | Version 2.03b 9KHz ~ 30MHz | ROHDE & SCHWARZ | 1082.9678.02 840.913/246 | N/A |

Note : Items 1 ~ 6 were calibrated within period of 1 year.

2 TEST PROCEDURE

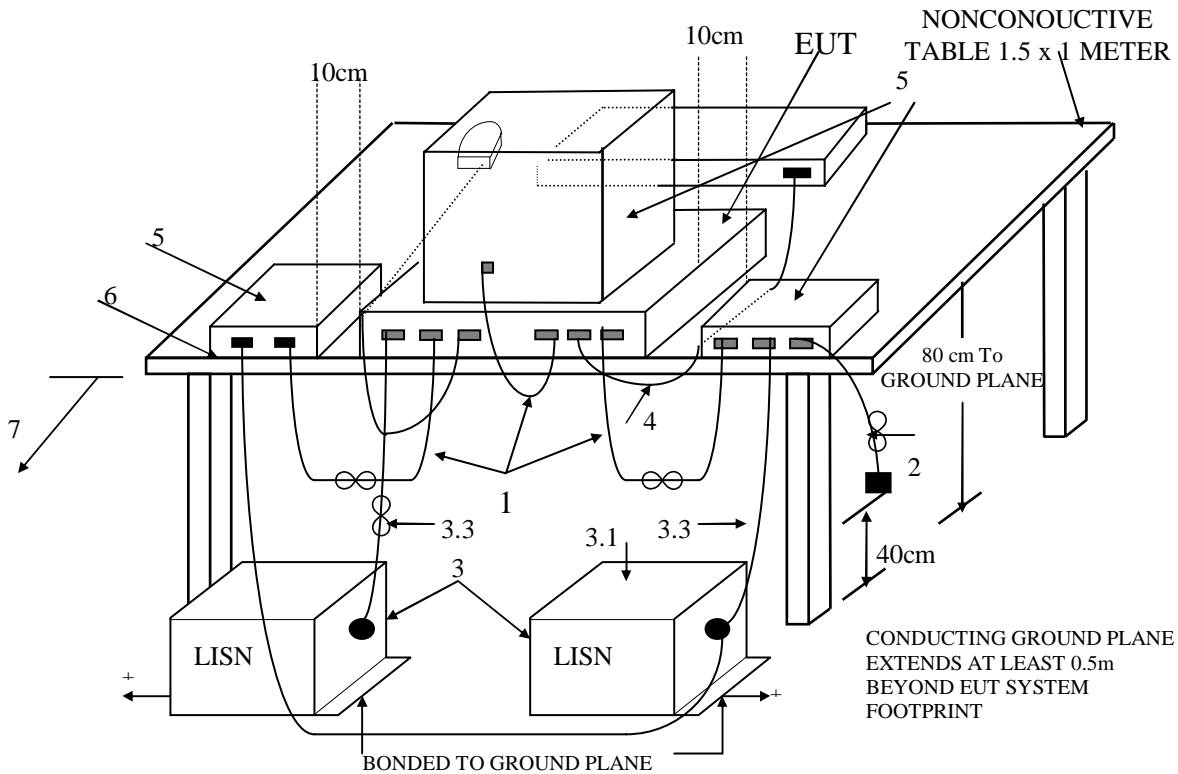
- 2.1 The EUT was tested according to **ANSI C63.4 – 2003 Section 5.2, 7.1, 7.2 & CISPR 22 - 1997 & C18-01-12 (HomeTek test procedure)**.
- 2.2 The EUT was placed 0.4 meter from the conducting wall of shielding room and kept at least 0.8 meter from any other grounded conducting surface.
- 2.3 The frequency range form 0.15 MHz to 30 MHz was investigated.
- 2.4 The LISN used was 50 Ohm / 50 uHenry as specified by Section 4.1.2 of **ANSI C63.4 - 2003**.
- 2.5 All the support peripherals are connect to the other LISN.
- 2.6 Cables and peripherals were moved to find the maximum emission levels for each frequency.

3 TEST SETUP

3.1 Typical : Setup Of Conducted Test

ELECTRICAL AND ELECTRONIC EQUIPMENT IN THE RANGE OF 9kHz TO 40 GHz

ANSI
C63.4-2003



+LISNs may have to be moved to the side to meet 3.3 below.

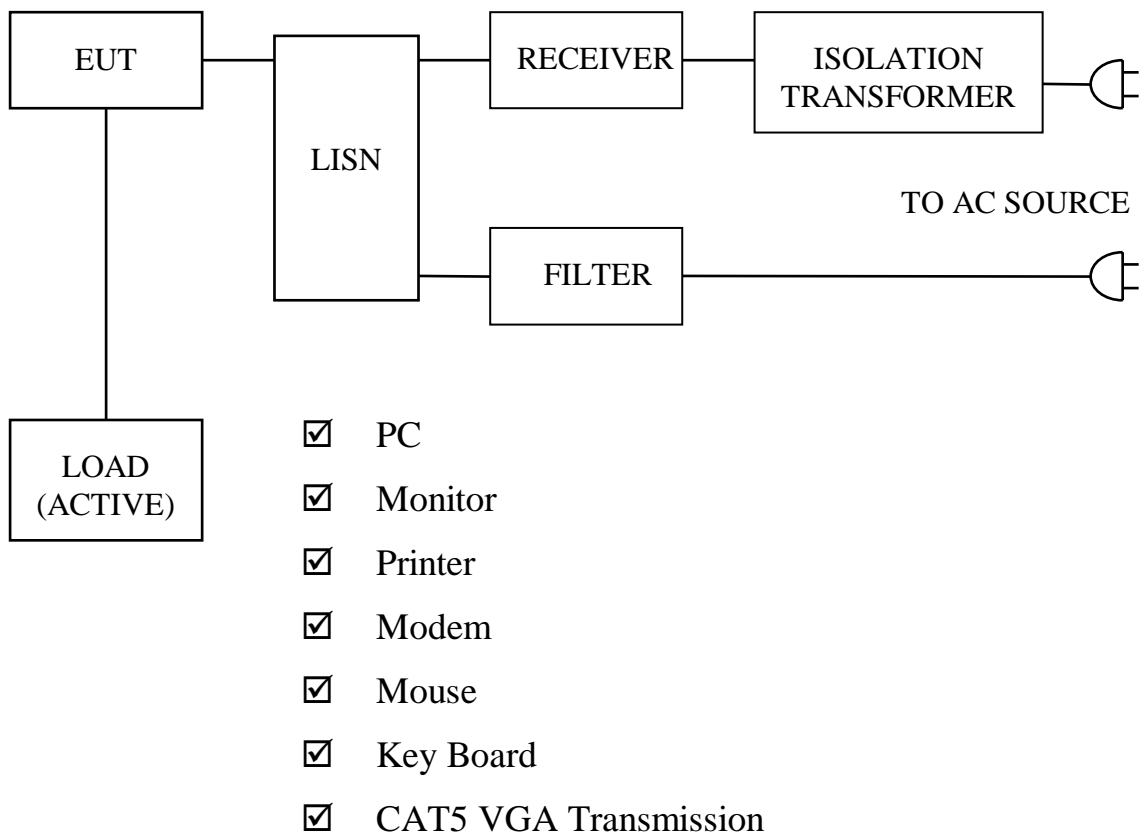
(Details for setup configuration, please refer to appendix A.)

LEGEND:

1. Interconnecting cables that hang closer than 40 cm to the ground plane shall be folded back and forth forming a bundle 30 to 40 cm long, hanging approximately in the middle between ground plane and table.
2. I/O cables that are connected to a peripheral shall be bundled in center. The end of the cable may be terminated if required using correct terminating impedance. The total length shall not exceed 1m.
3. EUT connected to one LISN. Unused LISN connectors shall be terminated in 50 Ω. LISN can be placed on top of, or immediately beneath, ground plane.
 - 3.1 All other equipment powered from second LISN.
 - 3.2 Multiple outlet strip can be used for multiple power cords of non-EUT equipment.
 - 3.3 LISN at least 80 cm from nearest part of EUT chassis.
4. Cables of hand-operated devices, such as keyboards, mice, etc., have to be placed as close as possible to the host.
5. Non-EUT components being tested.
6. Rear of EUT, including peripherals, shall be all aligned and flush with rear of tabletop.
7. Rear of tabletop shall be 40 cm removed from a vertical conducting plane that is bonded to the floor ground plane (see 5.2).

**Test Configuration
Tabletop Equipment Conducted Emission**

3.2 Block Diagram Of Conducted Test



4 CONFIGURATION OF THE EUT

The EUT was configured according to **ANSI C63.4 - 2003 & CISPR 22 - 1997**. All I/O ports were connected to the appropriate peripherals. All peripherals and cables are listed below (including internal device) :

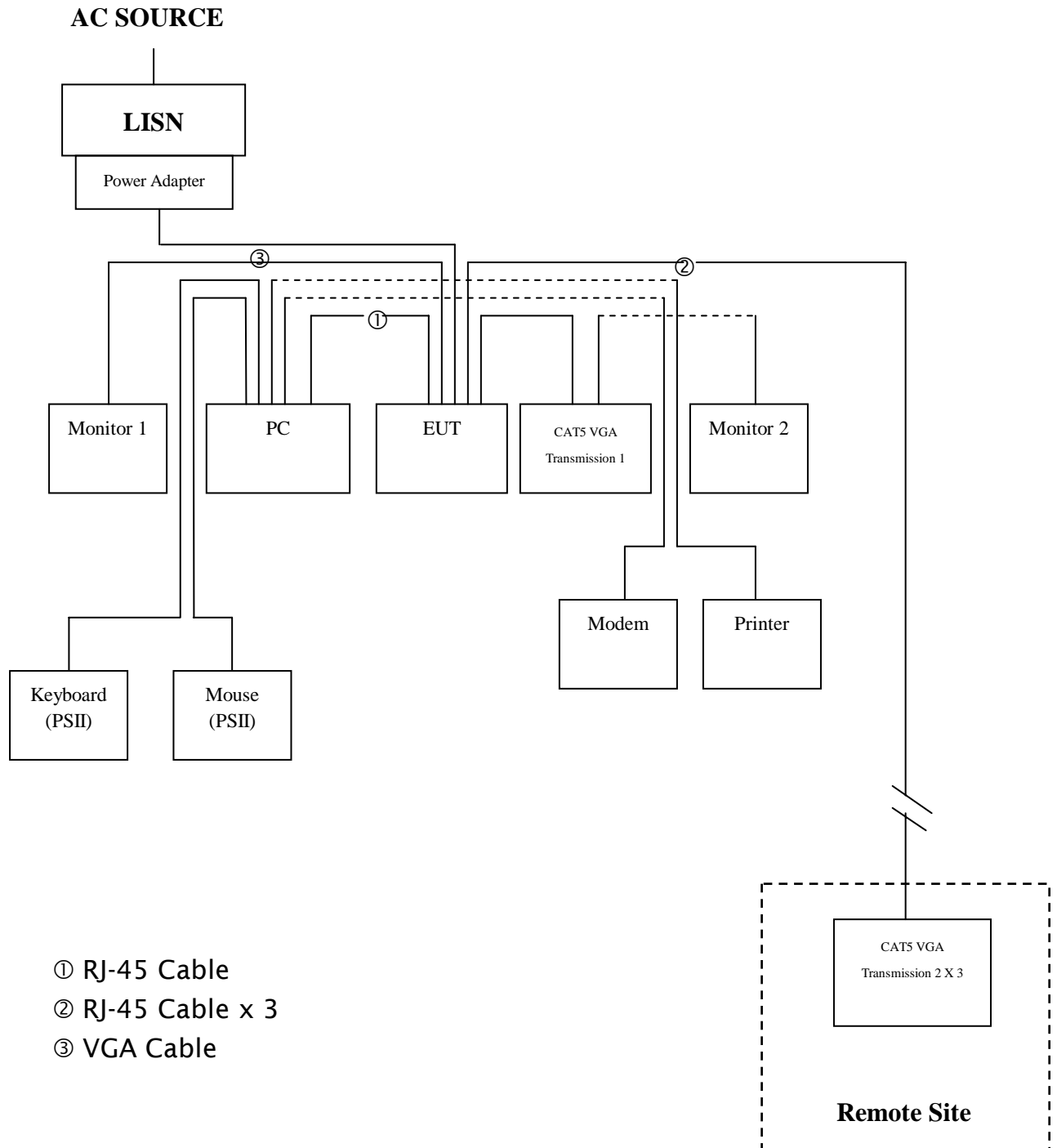


Figure 1



4.1 EUT

EUT Type : Proto Type Engineer Type Mass Production
Condition when received : Good Damage : _____
Device : CAT5 VGA Transmission
Applicant : SMART CABLING & TRANSMISSION CORP.
Manufacturer : SMART CABLING & TRANSMISSION CORP.
Model Number : TXA1XXVGAT, VD10XXT
Serial Number : N/A
FCC ID : N/A
D-Sub Input Port : Metal Type Connector
D-Sub Output Port : Metal Type Connector
RJ-45 Port x 2 : Metal Type Connector
Power Cord (AC) : 2 pin
Power Cord (DC) : Un-Shielded, 1.9 m, 2 pin
Power Supply Type : Linear Power Adapter

4.2 PERIPHERALS

Host Personal Computer

Manufacturer : HP/COMPAQ
Model Number : D330UT
Serial Number : SGH40606Z1
FCC ID : FCC DoC
Data Cable : Shielded, 1.8 m, Connected to the D-Sub Input port
Power Cord : Un-Shielded, 1.8 m



VGA Card (Install Host Personal Computer)

Manufacturer : ASUS
Model Number : V9999LE/TD/N/128M/A
Serial Number : 59CG018553
FCC ID : N/A
Data Cable : N/A
Power Cord : N/A

Monitor 1

Manufacturer : SAMSUNG
Model Number : GH19BS
Serial Number : GH19H4JW103538B
FCC ID : FCC DoC
Data Cable : Shielded, 1.8 m, Connected to the D-Sub Output port
Power Cord : Un-Shielded, 1.8 m

Monitor 2

Manufacturer : SONY
Model Number : CPD-G520
Serial Number : 2402887
FCC ID : FCC DoC
Data Cable : Shielded, 1.8 m, Connected to the D-Sub Output port
Power Cord : Un-Shielded, 1.8 m



Printer

Manufacturer : HP
Model Number : DJ400
Serial Number : MY77T1D0DD
FCC ID : B94C2642X
Data Cable : Shielded, 1.5 m, Connected to the Printer port
Power Cord & Adaptor : Un-Shielded, 1.8 m

Modem

Manufacturer : ACEEX
Model Number : 1414
Serial Number : 9013522
FCC ID : IFAXDM1414
Data Cable : Shielded, 1.5 m, Connected to the COM port
Power Cord & Adaptor : Un-Shielded, 1.8 m

Mouse (PSII)

Manufacturer : HP
Model Number : M-S69
Serial Number : 334684-002
FCC ID : FCC DoC
Data Cable : Shielded, 1.8 m, Connected to the PSII port
Power Cord : N/A



KeyBoard (PSII)

Manufacturer : HP
Model Number : KB-0133
Serial Number : 323686-AB1
FCC ID : FCC DoC
Data Cable : Shielded, 1.5 m, Connected to the PSII port
Power Cord : N/A

CAT5 VGA Transmission

Manufacturer : SMART CABLING & TRANSMISSION CORP.
Model Number : VD105R
Serial Number : N/A
FCC ID : N/A
Data Cable : Shielded, 2.8 m, Connected to the RJ-45 port
Power Cord : Un-Shielded, 1.9 m

Power Adapter

Manufacturer : YNELEC
Model Number : YAD-0500500CR
Serial Number : N/A
FCC ID : N/A
Data Cable : N/A
Power Cord : Un-Shielded, 1.9 m



CAT5 VGA Transmission (Remote Site)

Manufacturer : SMART CABLING & TRANSMISSION CORP.

Model Number : VD105R

Serial Number : N/A

FCC ID : N/A

Data Cable : Shielded, 10 m, Connected to the RJ-45 port

Power Cord : Un-Shielded, 1.9 m

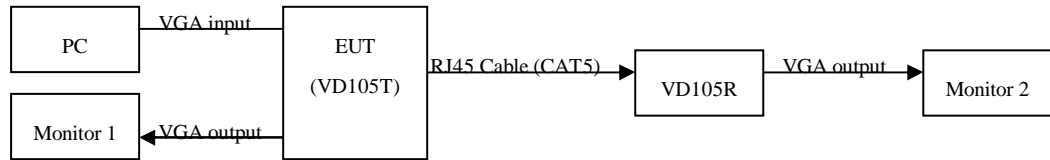
4.3 REMARK : N/A

5 EUT OPERATING CONDITION

5.1 The operation frequency of the EUT is 30~95 KHz.

5.2 Configure the EUT according to the **ANSI C63.4 - 2003 & CISPR 22 - 1997**.

5.3



5.4 PC give VGA signal to EUT via VGA port, and bypass VGA input signal to VGA output.

5.5 EUT transform VGA signal to Muti-output (RJ-45 Cable).

5.6 Monitor 2 receives signal through VD105R, and display “H” character.

5.7 Measure the emission noise.

5.8 The photos of conducted test configuration, please refer to appendix A.

6 LIMIT OF CONDUCTED POWER LINE EMISSION CLASS B

| Frequency Range | Quasi Peak | Average |
|-----------------|--------------|--------------|
| 0.15 ~ 0.5 MHz | 66 - 56 dBuV | 56 - 46 dBuV |
| 0.5 ~ 5 MHz | 56 dBuV | 46 dBuV |
| 5 ~ 30 MHz | 60 dBuV | 50 dBuV |

6.1 In the above table, the tighter limit applies at the band edges.

7 RESULT OF CONDUCTED POWER LINE TEST

7.1 The frequency range from 0.15 MHz to 30 MHz was investigated. All readings are quasi-peak values and average.

7.2 IF bandwidth : 9 kHz, Meas Time : 1 sec.

7.3 Temperature : 28 °C, Humidity : 60 % RH.

7.4 Deviations from the test standards and rules : None

7.5 The conducted test result were gained by following procedures :
 Level = Reading Level + Insertion Loss of LISN + Cable Loss
 (All calculation were done by ESHS30 EMI test receiver.)

7.6 Result : **PASSED**

8 CONDUCTED POWER LINE TEST DATA (PAGE 1)

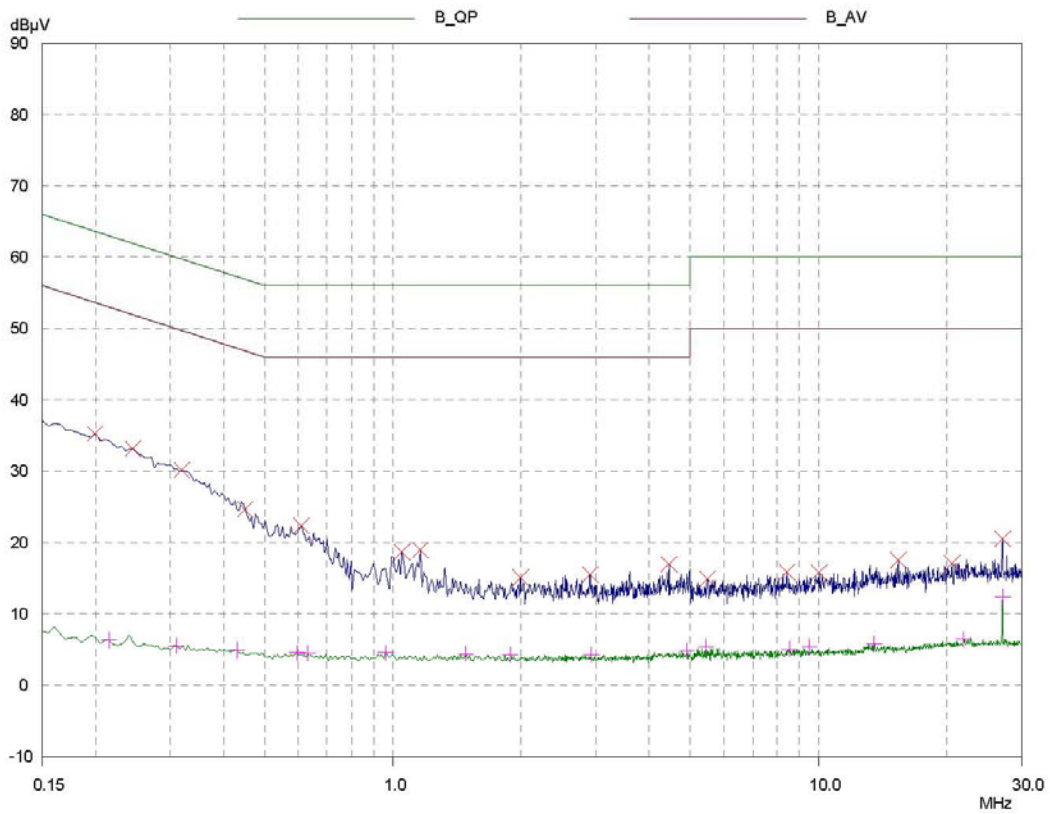
HomeTek EMC LAB. TEL :886-2-22608375

16 Jun 2006 18:11

CONDUCTED EMISSIONS

EUT: CAT5 VGA Transmission
 Manuf: 5F007
 Op Cond: LINE 1
 Operator: ALBERT
 Test Spec: FOR CISPR22 CLASS B
 Comment: 110V/60Hz
 VD105T (1280x1024 75Hz)
 Result File: 5f00712b.dat : 1280x1024 75Hz

Prescan Measurement: Detectors: X PK / + AV
 Meas Time: see scan settings
 Subranges: 16
 Acc Margin: 55 dB





9 CONDUCTED POWER LINE TEST DATA (PAGE 2)

HomeTek EMC LAB. TEL :886-2-22608375

16 Jun 2006 18:11

CONDUCTED EMISSIONS

EUT: CAT5 VGA Transmission
 Manuf: 5F007
 Op Cond: LINE 1
 Operator: ALBERT
 Test Spec: FOR CISPR22 CLASS B
 Comment: 110V/60Hz
 VD105T (1280x1024 75Hz)
 Result File: 5f00712b.dat : 1280x1024 75Hz

Prescan Measurement: Detectors: X PK / + AV
 Meas Time: see scan settings
 Subranges: 16
 Acc Margin: 55 dB

Peak Search Results

| Frequency MHz | PK Level dBµV | PK Limit dBµV | PK Delta dB |
|------------------|------------------|------------------|----------------|
| 0.2 | 35.18 | 63.61 | 28.43 |
| 0.245 | 33.13 | 61.92 | 28.79 |
| 0.32 | 30.07 | 59.71 | 29.64 |
| 0.45 | 24.61 | 56.88 | 32.27 |
| 0.61 | 22.36 | 56.00 | 33.64 |
| 1.05 | 18.67 | 56.00 | 37.33 |
| 1.16 | 18.95 | 56.00 | 37.05 |
| 1.99 | 15.08 | 56.00 | 40.92 |
| 2.9 | 15.51 | 56.00 | 40.49 |
| 4.45 | 17.00 | 56.00 | 39.00 |
| 5.48 | 14.91 | 60.00 | 45.09 |
| 8.43 | 15.88 | 60.00 | 44.12 |
| 10.04 | 15.82 | 60.00 | 44.18 |
| 15.39 | 17.53 | 60.00 | 42.47 |
| 20.55 | 17.09 | 60.00 | 42.91 |
| 27.03 | 20.48 | 60.00 | 39.52 |

| Frequency MHz | AV Level dBµV | AV Limit dBµV | AV Delta dB |
|------------------|------------------|------------------|----------------|
| 0.215 | 6.38 | 53.01 | 46.63 |
| 0.31 | 5.52 | 49.97 | 44.45 |
| 0.43 | 4.93 | 47.25 | 42.32 |
| 0.595 | 4.58 | 46.00 | 41.42 |
| 0.63 | 4.52 | 46.00 | 41.48 |
| 0.96 | 4.58 | 46.00 | 41.42 |
| 1.48 | 4.40 | 46.00 | 41.60 |
| 1.89 | 4.34 | 46.00 | 41.66 |
| 2.92 | 4.34 | 46.00 | 41.66 |
| 4.91 | 4.87 | 46.00 | 41.13 |
| 5.44 | 5.42 | 50.00 | 44.58 |
| 8.56 | 5.08 | 50.00 | 44.92 |
| 9.49 | 5.35 | 50.00 | 44.65 |
| 13.48 | 5.81 | 50.00 | 44.19 |
| 21.92 | 6.44 | 50.00 | 43.56 |
| 27.03 | 12.37 | 50.00 | 37.63 |

* limit exceeded

10 CONDUCTED POWER LINE TEST DATA (PAGE 3)

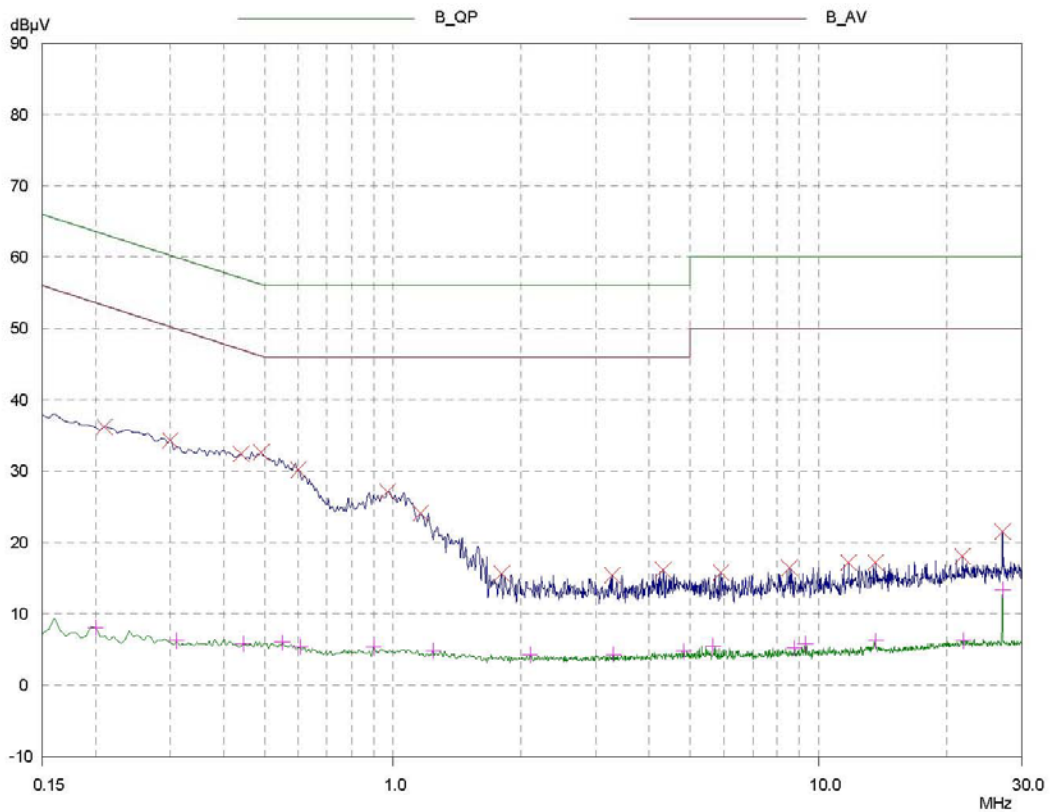
HomeTek EMC LAB. TEL :886-2-22608375

16 Jun 2006 18:07

CONDUCTED EMISSIONS

EUT: CAT5 VGA Transmission
 Manuf: 5F007
 Op Cond: LINE 2
 Operator: ALBERT
 Test Spec: FOR CISPR22 CLASS B
 Comment: 110V/60Hz
 VD105T (1280x1024 75Hz)
 Result File: 5f00722b.dat : 1280x1024 75Hz

Prescan Measurement: Detectors: X PK / + AV
 Meas Time: see scan settings
 Subranges: 16
 Acc Margin: 55 dB





11 CONDUCTED POWER LINE TEST DATA (PAGE 4)

HomeTek EMC LAB. TEL :886-2-22608375

16 Jun 2006 18:07

CONDUCTED EMISSIONS

EUT: CAT5 VGA Transmission
 Manuf: 5F007
 Op Cond: LINE 2
 Operator: ALBERT
 Test Spec: FOR CISPR22 CLASS B
 Comment: 110V/60Hz
 VD105T (1280x1024 75Hz)
 Result File: 5f00722b.dat : 1280x1024 75Hz

Prescan Measurement: Detectors: X PK / + AV
 Meas Time: see scan settings
 Subranges: 16
 Acc Margin: 55 dB

Peak Search Results

| Frequency MHz | PK Level dBµV | PK Limit dBµV | PK Delta dB |
|------------------|------------------|------------------|----------------|
| 0.21 | 36.22 | 63.21 | 26.99 |
| 0.3 | 34.25 | 60.24 | 25.99 |
| 0.44 | 32.35 | 57.06 | 24.71 |
| 0.49 | 32.62 | 56.17 | 23.55 |
| 0.6 | 30.14 | 56.00 | 25.86 |
| 0.97 | 27.10 | 56.00 | 28.90 |
| 1.16 | 24.12 | 56.00 | 31.88 |
| 1.8 | 15.63 | 56.00 | 40.37 |
| 3.27 | 15.41 | 56.00 | 40.59 |
| 4.31 | 16.15 | 56.00 | 39.85 |
| 5.88 | 15.77 | 60.00 | 44.23 |
| 8.55 | 16.43 | 60.00 | 43.57 |
| 11.77 | 17.18 | 60.00 | 42.82 |
| 13.61 | 17.20 | 60.00 | 42.80 |
| 21.79 | 18.08 | 60.00 | 41.92 |
| 27.03 | 21.58 | 60.00 | 38.42 |

| Frequency MHz | AV Level dBµV | AV Limit dBµV | AV Delta dB |
|------------------|------------------|------------------|----------------|
| 0.2 | 8.08 | 53.61 | 45.53 |
| 0.31 | 6.26 | 49.97 | 43.71 |
| 0.445 | 5.83 | 46.97 | 41.14 |
| 0.55 | 6.01 | 46.00 | 39.99 |
| 0.605 | 5.44 | 46.00 | 40.56 |
| 0.9 | 5.36 | 46.00 | 40.64 |
| 1.24 | 4.84 | 46.00 | 41.16 |
| 2.1 | 4.26 | 46.00 | 41.74 |
| 3.29 | 4.32 | 46.00 | 41.68 |
| 4.82 | 4.82 | 46.00 | 41.18 |
| 5.64 | 5.49 | 50.00 | 44.51 |
| 8.76 | 5.25 | 50.00 | 44.75 |
| 9.29 | 5.82 | 50.00 | 44.18 |
| 13.61 | 6.22 | 50.00 | 43.78 |
| 21.92 | 6.23 | 50.00 | 43.77 |
| 27.03 | 13.32 | 50.00 | 36.68 |

* limit exceeded

RADIATED EMISSION TEST

1 TEST INSTRUMENTS & FACILITIES

The following test Instruments was used during the radiated emission test :

| Item | Instruments /facilities | Specification | Manufacturer | Model # / S/N# | Date of Cal. |
|------|-------------------------|--|-----------------|------------------------|--------------|
| 1 | OPEN AREA TEST SITE | <input checked="" type="checkbox"/> OATS 3 | | | JUL/2005 |
| 2 | EMI TEST RECEIVER | 20Hz ~ 26.5GHz | ROHDE & SCHWARZ | ESMI 845442/006 | FEB/2006 |
| 3 | PRE-AMPLIFIER | 9KHz ~ 3000MHz | ADVANTEST | BB525C 90081001 | OCT/2005 |
| 4 | ANTENNA (BI-LOG) | 25MHz ~ 2GHz | SCHAFFNER | CBL6112B S/N : 2614 | JUN/2006 |
| 5 | Attenuation | 50Ω/6dB | JYE BAO | FAT-N (M-F) 001 | JUL/2005 |
| 6 | Cable | 10m | SUHNER | RG214/U OS3-003 | DEC/2005 |
| 7 | Cable | 14m | BELDEN | 9913 OS3-001 | DEC/2005 |
| 8 | EMI 32 (software) | N/A | AUDIX | 19991013-0923 | N/A |

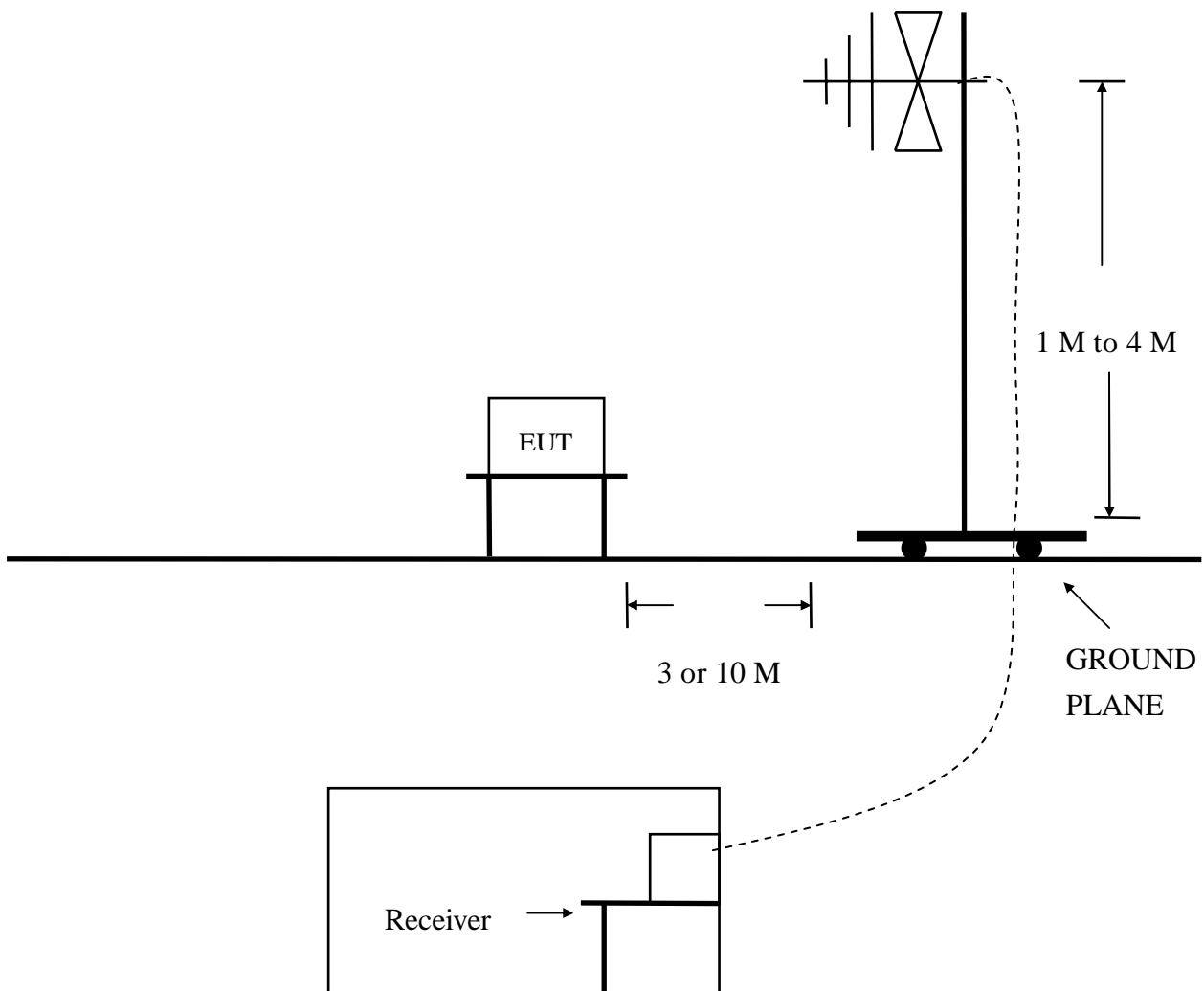
Note : Items 1 ~ 7 were calibrated within period of 1 year.

2 TEST PROCEDURE

- 2.1 The EUT was test according to **ANSI C63.4 – 2003 Section 5.4, 5.5, 8.1, 8.2, 8.3 & CISPR 22 - 1997 & C18-01-11 (HomeTek test procedure)**.
- 2.2 The radiated test was performed at HomeTek Lab's Open Site III.
- 2.3 The frequency range from 30 MHz to 1 GHz, the measurement were made at 10 meters, with a BI-log antenna.

3 TEST SETUP

3.1 TEST SETUP OF OPEN SITE.



4 CONFIGURATION OF THE EUT

Same as “Conducted Power Line test”, section 4

5 EUT OPERATING CONDITION

5.1 Same as “Conducted Power Line test”, section 5

5.2 The radiated emission in the frequency range from 30 MHz - 1000 MHz was test in a horizontal and vertical polarization at HomeTek Lab’s open site III.

5.3 The photos of radiated test configuration, please refer to appendix A.

6 LIMIT OF RADIATED EMISSION CLASS B

CISPR 22

| Frequency (MHz) | Measurement Distance | Limit (dBuV/m) |
|-----------------|----------------------|----------------|
| 30 - 230 | 10 (M) | 30 |
| 230 - 1000 | 10 (M) | 37 |

6.1 The tighter limit shall apply at the edge between two frequency bands.

6.2 Measurement distance in meters between the measuring instrument antenna and the closed point of any part of the EUT or peripherals.

7 RESULT OF RADIATED EMISSION TEST

- 7.1 The frequency range from 30 MHz to 1 GHz was investigated.
- 7.2 All readings below or equal 1 GHz are quasi-peak or peak values with resolution bandwidth of 120 KHz.
- 7.3 All readings above 1 GHz are average or peak values with resolution bandwidth of 1 MHz
- 7.4 The measurements were made at 10 meters of HomeTek Lab's open site III.
- 7.5 Temperature : 31 °C, Humidity : 58 % RH.
- 7.6 Deviation form the test standards and rules : None
- 7.7 The radiation emission result were gained by the following method :
Level = Reading Level + Probe Factor (Antenna Factor) + Cable Loss – Preamp Factor
Over Limit = Level – Limit Line
- 7.8 The radiated mission test was passed at minimum margin :
Vertical 32.41 MHz/ 26.53 dBuV/m, Antenna Height 1 Meter,
Turn Table 180 degree, The Mode: VD105T, Model : 1280 x 1024 75Hz.
- 7.9 Result : **PASSED**



8 RADIATED EMISSION TEST DATA (PAGE 1)

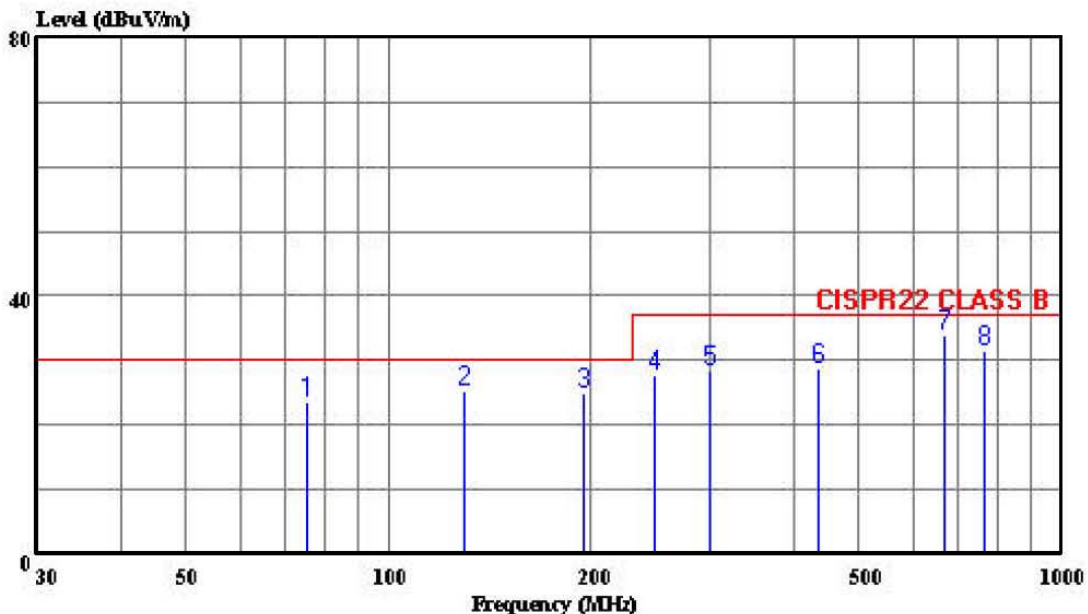


HomeTek Technology Inc.

No 67-9, Shi-Men Rd., Tu-Chen City, Taipei County, Taiwan R.O.C. Tel:02-22608375 Fax:02-22748013

Data#: 6 File#: 5f007.EMI

Date: 2006-06-16 Time: 16:35:57



Trace:

Ref Trace:

Condition: CISPR22 CLASS B 10m CHASE 2614 060506 HORIZONTAL
eut : CAT5 VGA Transmission
power: 110V/60Hz
memo : VD105T (1280*1024)

Page: 1

| | Freq | Level | Limit | Over | ReadAntenna | Cable | Preamp | | |
|---|---------|--------|--------|-------|-------------|--------|--------|--------|--------|
| | MHz | dBuV/m | dBuV/m | dB | Level | Factor | Loss | Factor | Remark |
| | | | | | dBuV | dB/m | dB | dB | |
| 1 | 75.613 | 23.45 | 30.00 | -6.55 | 41.43 | 6.71 | 1.17 | 25.85 | Peak |
| 2 | 129.627 | 25.44 | 30.00 | -4.56 | 38.09 | 11.54 | 1.55 | 25.73 | Peak |
| 3 | 194.416 | 24.78 | 30.00 | -5.22 | 39.46 | 9.01 | 1.95 | 25.64 | Peak |
| 4 | 248.414 | 27.63 | 37.00 | -9.37 | 38.89 | 12.14 | 2.17 | 25.57 | Peak |
| 5 | 300.728 | 28.34 | 37.00 | -8.66 | 38.37 | 13.13 | 2.37 | 25.52 | Peak |
| 6 | 434.821 | 28.58 | 37.00 | -8.42 | 34.45 | 16.28 | 3.04 | 25.20 | Peak |
| 7 | 669.255 | 33.87 | 37.00 | -3.13 | 35.07 | 18.93 | 4.02 | 24.15 | Peak |
| 8 | 764.741 | 31.52 | 37.00 | -5.48 | 31.44 | 19.70 | 4.25 | 23.86 | Peak |



9 RADIATED EMISSION TEST DATA (PAGE 2)

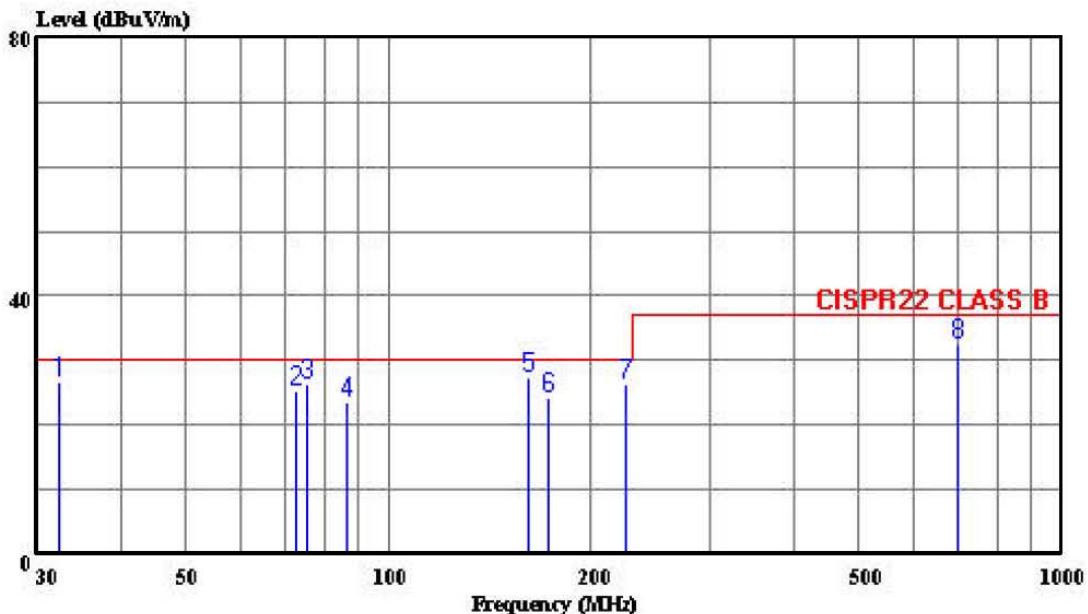


HomeTek Technology Inc.

No 67-9, Shi-Men Rd., Tu-Chen City, Taipei County, Taiwan R.O.C. Tel:02-22608375 Fax:02-22748013

Data#: 5 File#: 5f007.EMI

Date: 2006-06-16 Time: 16:00:50



Trace:

Ref Trace:

Condition: CISPR22 CLASS B 10m CHASE 2614 060506 VERTICAL
eut : CAT5 VGA Transmission
power: 110V/60Hz
memo : VD105T (1280*1024)

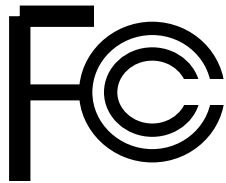
Page: 1

| | Freq | Level | Limit | Over | Read | Antenna | Cable | Preamp | Remark |
|---|---------|--------|--------|-------|-------|---------|-------|--------|--------|
| | MHz | dBuV/m | dBuV/m | dB | dBuV | dB/m | dB | dB | |
| 1 | 32.419 | 26.53 | 30.00 | -3.47 | 34.05 | 17.68 | 0.77 | 25.97 | QP |
| 2 | 73.000 | 25.33 | 30.00 | -4.67 | 43.52 | 6.52 | 1.14 | 25.85 | Peak |
| 3 | 75.610 | 26.16 | 30.00 | -3.84 | 44.14 | 6.71 | 1.17 | 25.85 | Peak |
| 4 | 86.406 | 23.58 | 30.00 | -6.42 | 39.75 | 8.39 | 1.26 | 25.82 | QP |
| 5 | 160.933 | 27.29 | 30.00 | -2.71 | 41.32 | 9.91 | 1.75 | 25.68 | Peak |
| 6 | 172.820 | 24.24 | 30.00 | -5.76 | 38.72 | 9.37 | 1.82 | 25.66 | Peak |
| 7 | 225.620 | 26.47 | 30.00 | -3.53 | 40.19 | 9.80 | 2.08 | 25.60 | Peak |
| 8 | 702.691 | 32.56 | 37.00 | -4.44 | 33.49 | 18.84 | 4.19 | 23.96 | Peak |

SAMPLE OF FCC DoC LABEL 1

This device complies with part 15 of the FCC Rules.
Operation is subject to the following two conditions: (1)
This device may not cause harmful interference. And (2)
this device must accept any interference received, including
interference that may cause undesired operation.

SAMPLE OF FCC DoC LABEL 2



Trade Name
Model Number



HomeTek Technology Inc.

Appendix A

PHOTOS OF TEST CONFIGURATION

PHOTO OF CONDUCTED POWER LINE TEST

Test Mode : 1280 x 1024 75Hz , Model : VD105T



Front View



Rear View

PHOTO OF RADIATED EMISSION TEST

Test Mode : 1280 x 1024 75Hz , Model : VD105T



Front View



Rear View



HomeTek Technology Inc.

Appendix B

PHOTOS OF EUT

PHOTO OF EUT

Model : VD105T , TTA111VGAT



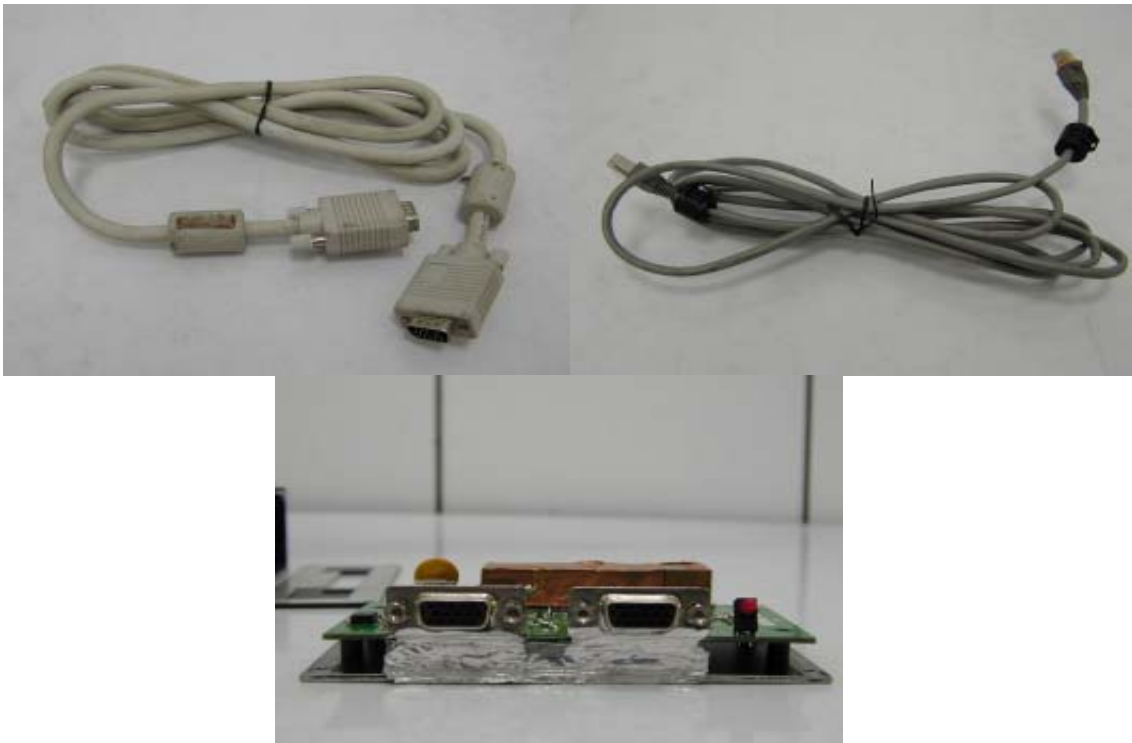
Full View of EUT



Full View of Adaptor

PHOTO OF EUT

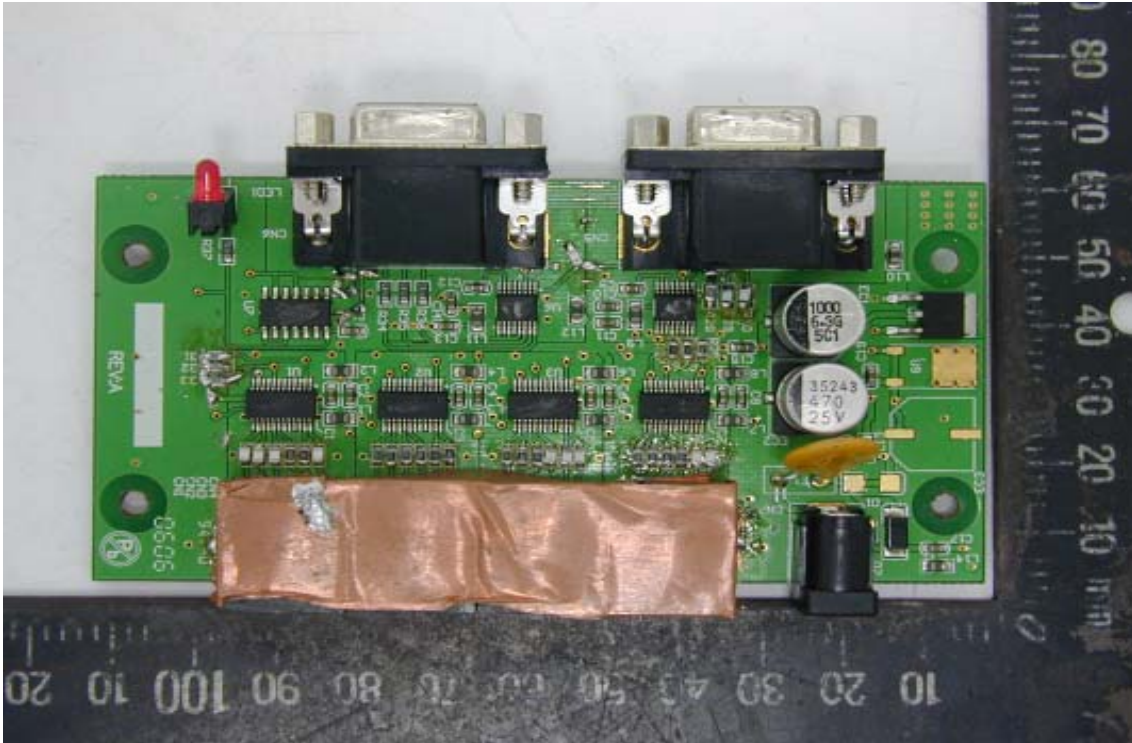
Model : VD105T , TTA111VGAT



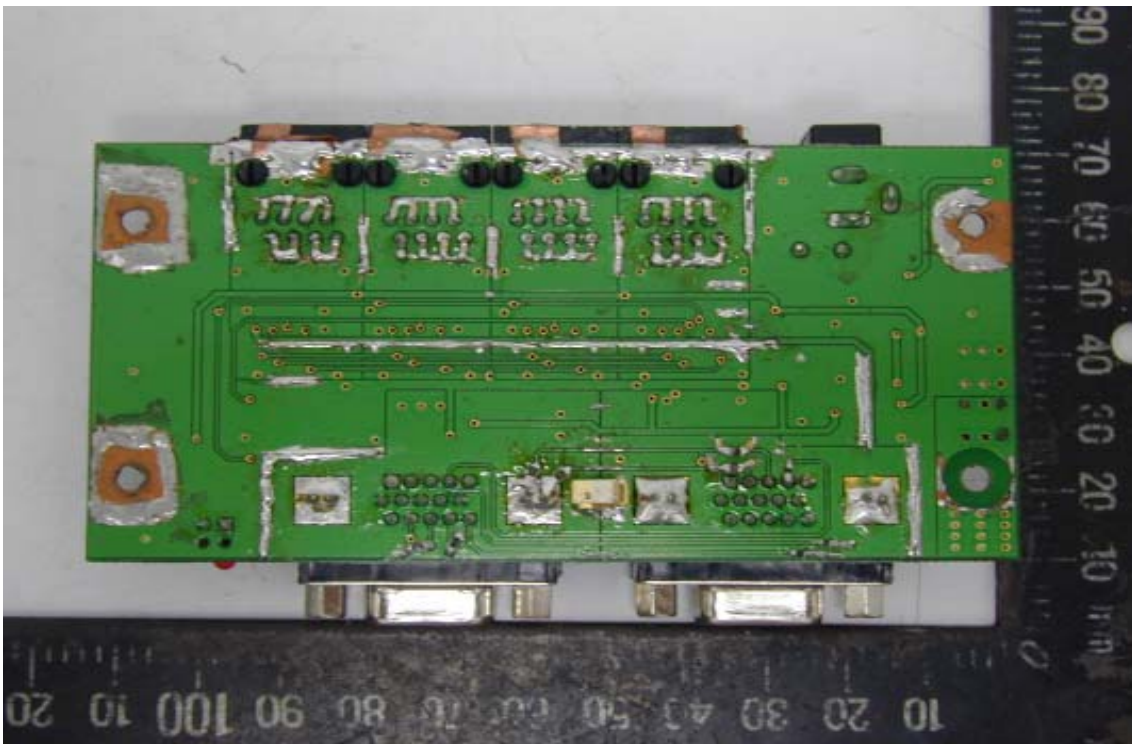
Full View of EMI Solution and Cable

PHOTO OF EUT

Model : VD105T , TTA111VGAT



Component Side of Main Board



Solder Side of Main Board

Declaration of Conformity

Responsible Party Name :

Address :

Phone No :

Fax No :

Declares under our sole responsibility that the product

Product Name : CAT5 VGA Transmission

Model No. : TXA1XXVGAT, VD10XXT

to which this declaration relates is in conformity with the following standards or other normative documents

This device complies with Part 15 of the FCC Rules. Operation is subject to the following two conditions : (1) this device may not cause harmful interference, and (2) this device must accept any interference received, including interference that may cause undesired operation.

Representative Person's Name : _____

Signature : _____

Date : _____

United States Department of Commerce
National Institute of Standards and Technology



Certificate of Accreditation to ISO/IEC 17025:1999

NVLAP LAB CODE: 200331-0

HomeTek Technology Inc.

Taipei Shien 236
TAIWAN

*is recognized by the National Voluntary Laboratory Accreditation Program for conformance with criteria set forth in
NIST Handbook 150:2001 and all requirements of ISO/IEC Guide 17025:1999.
Accreditation is granted for specific services, listed on the Scope of Accreditation, for:*

ELECTROMAGNETIC COMPATIBILITY AND TELECOMMUNICATIONS

2005-10-01 through 2006-09-30

Effective dates



For the National Institute of Standards and Technology

A handwritten signature in black ink, appearing to read "John P. Ward".



SCOPE OF ACCREDITATION TO ISO/IEC 17025:1999

HomeTek Technology Inc.
P.O Box: 13-131, Pan-Chiao City
No. 67-9 Shir Men Rd., Tu Chen City
Taipei Shien 236
TAIWAN
Mr. Grant Huang
Phone: 886-2-22608375 Fax: 886-2-22748013
E-Mail: hometek@ms15.hinet.net

**ELECTROMAGNETIC COMPATIBILITY
AND TELECOMMUNICATIONS**

NVLAP LAB CODE 200331-0

NVLAP Code Designation / Description

Emissions Test Methods:

| | |
|------------|--|
| 12/CIS14a | EN 55014-1 (1993), A1 (1997), A2 (1999): |
| 12/CIS14a2 | BS EN 55014-1 (2001) with A1 and A2: Electromagnetic compatibility - Requirements for household appliances, electric tools and similar apparatus - Part 1: Emission |
| 12/CIS14b1 | AS/NZS CISPR 14-1 (2003): Electromagnetic Compatibility - Requirements for household appliances, electric tools and similar apparatus - Part 1: Emission |
| 12/CIS14c | CNS 13783-1: Electromagnetic Compatibility Requirements for household appliances, electric tools and similar apparatus - Part 1: Emissions |
| 12/CIS14d | IEC/CISPR 14-1 (2001) and A1 (2001): Electromagnetic Compatibility - Requirements for household appliances, electric tools and similar apparatus - Part 1: Emissions |
| 12/CIS14x | IEC/CISPR 14-1, Ed. 4 (2003): Electromagnetic Compatibility - Requirements for household appliances, electric tools and similar apparatus - Part 1: Emission |
| 12/CIS22 | IEC/CISPR 22 (1997) & EN 55022 (1998) + A1(2000): Limits and methods of measurement of radio disturbance characteristics of information technology equipment |
| 12/CIS22a | IEC/CISPR 22 (1993) and EN 55022 (1994): Limits and methods of measurement of radio disturbance characteristics of information technology equipment, Amendment 1 (1995) and Amendment 2 (1996) |

2005-10-01 through 2006-09-30

Effective dates

For the National Institute of Standards and Technology



**National Voluntary
Laboratory Accreditation Program**



**ELECTROMAGNETIC COMPATIBILITY
AND TELECOMMUNICATIONS**

NVLAP LAB CODE 200331-0

| <i>NVLAP Code</i> | <i>Designation / Description</i> |
|-------------------|--|
| 12/CIS22b | CNS 13438 (1997): Limits and Methods of Measurement of Radio Interference Characteristics of Information Technology Equipment |
| 12/CIS22c | IEC/CISPR 22, Fourth Edition (2003-04) & EN 55022 (1998): Information technology equipment - Radio disturbance characteristics - Limits and methods of measurement |
| 12/FCC15b | ANSI C63.4 (2003) with FCC Method 47 CFR Part 15, Subpart B: Unintentional Radiators |
| 12/T51a | AS/NZS CISPR 22 (2004): Information technology equipment - Radio disturbance characteristics - Limits and methods of measurement |
| 12/VCCIa | VCCI: Agreement of Voluntary Control Council for Interference by Information Technology Equipment - Technical Requirements: V-3/2004.04 |

2005-10-01 through 2006-09-30

Effective dates

For the National Institute of Standards and Technology