

HE05B software instruction manual

Index

System requirement:.....	- 1 -
Before software installation:.....	- 2 -
Stream Control Panel Installations:.....	- 5 -
Stream Control Panel Settings:.....	- 7 -
1. System Settings(S)→Host(H):.....	- 8 -
2. System Settings(S)→Client(C):.....	- 11 -
3. System Settings(S)→Group(G):.....	- 14 -
4. System Settings(S)→ Password(P):.....	- 16 -
5. System Settings(S)→ Language (L):.....	- 19 -
Stream Control Panel Operation:.....	- 20 -
1. START STREAM:.....	- 20 -
2. STOP STREAM:	- 22 -
3. ANNOUNCEMENT:	- 23 -
4. STREAM STATUS:.....	- 25 -
Trouble shooting:.....	- 26 -

System requirement:

Operation Systems: Windows XP SP3 or above

Processor: 1G Hz

RAM: 512M

Disk Space: 100M

Before software installation:

HE05B is an IP based broadcasting system, you have to get the IP address to start configuration your system. For receivers you could connect to the TV and see the IP address when booting. For transmitters please install Bonjour plug-in for Internet Explorer to get the IP address as following step:

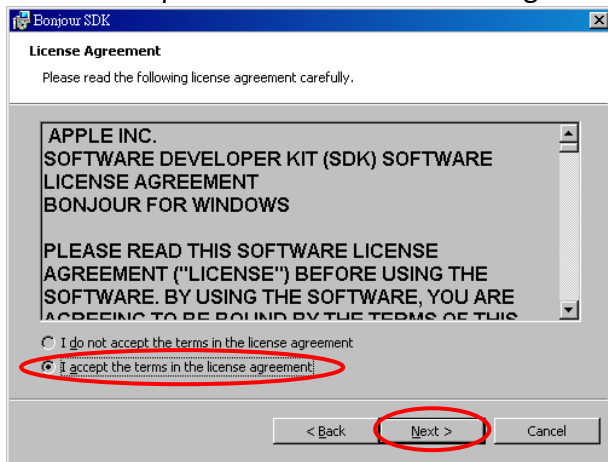
- a. Click "BonjourSDKSetup.exe" to install Bonjour plug-in for Internet Explorer.



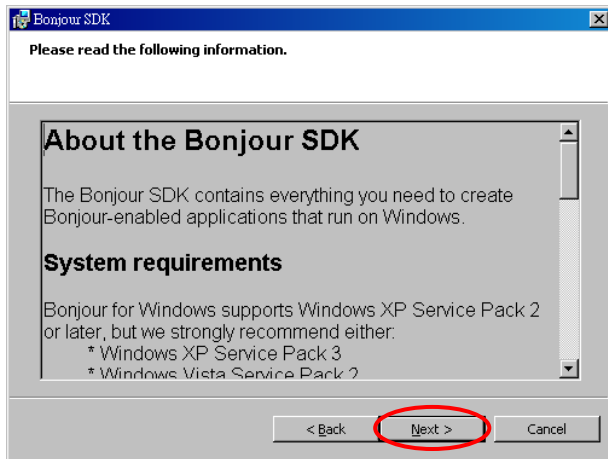
- b. Click "Next" to continue.



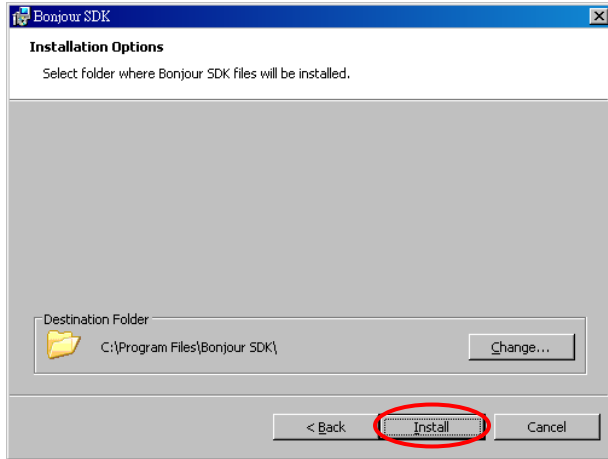
- c. Click "I accept the terms in the license agreement" to continue.



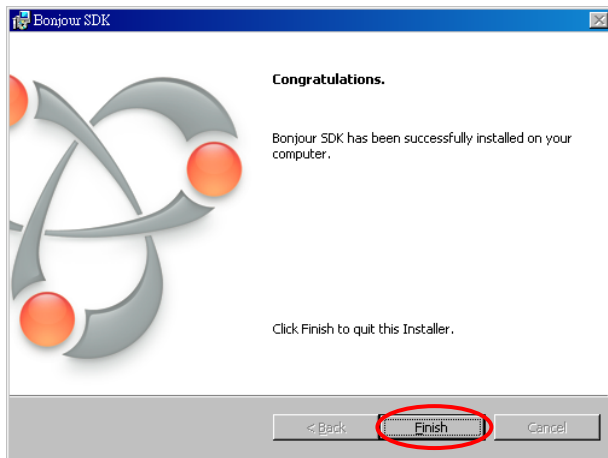
- d. Click "Next" to continue.



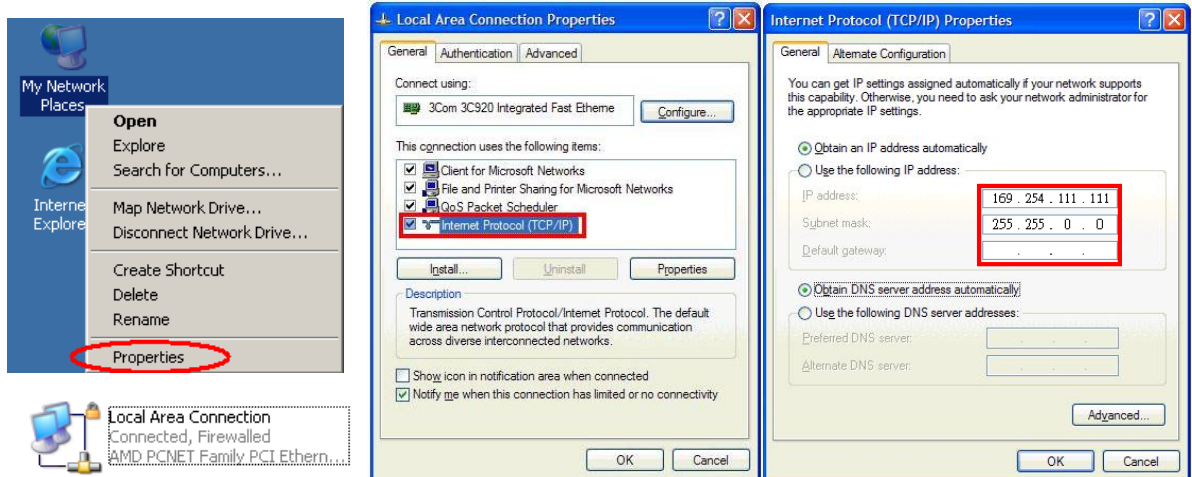
e. Click "Install" to start installation.



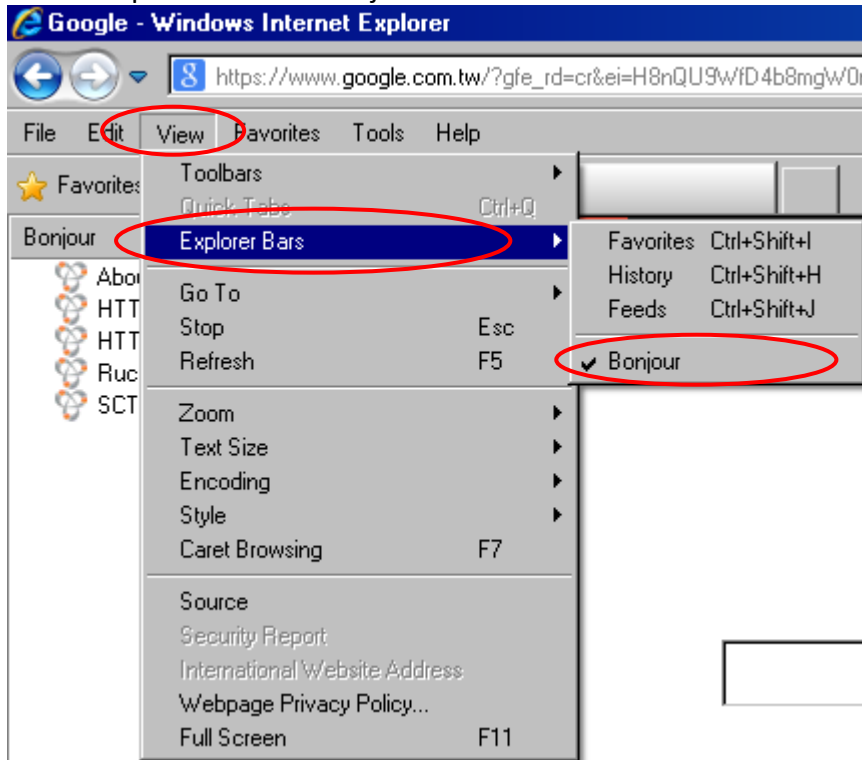
f. Click "Finish" to exit installation.



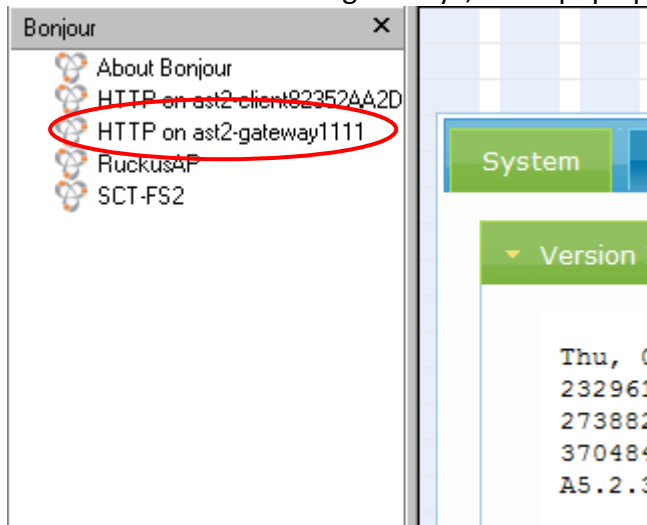
g. Right click on "My Network Place" → "Properties" then right click on "Local Area Connection" → "Properties" then double click on "Internet Protocol (TCP/IP)" to setting as below:
(IP address 169.254.111.111, sub mask 255.255.0.0)



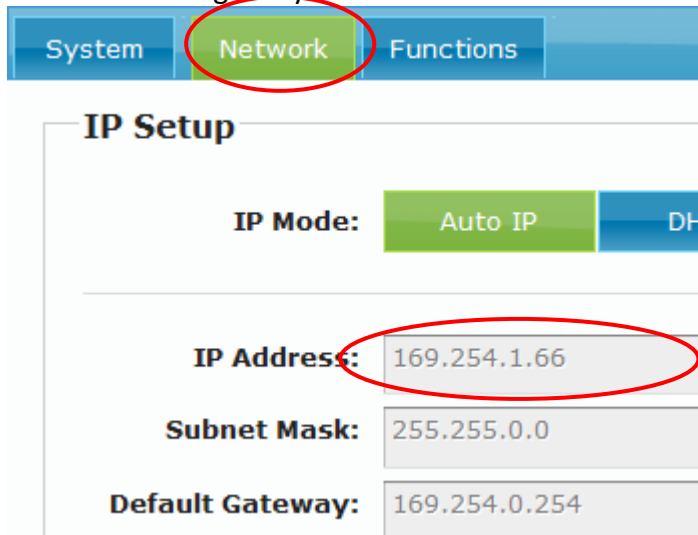
- h. Use CAT5 cable to connect transmitter RJ45 port to PC LAN port, open IE browser then select View → Explorer Bars → Bonjour.



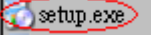
- i. Double click on “HTTP on ast2-gateway”, it will pop up web setup in Bonjour windows as below:



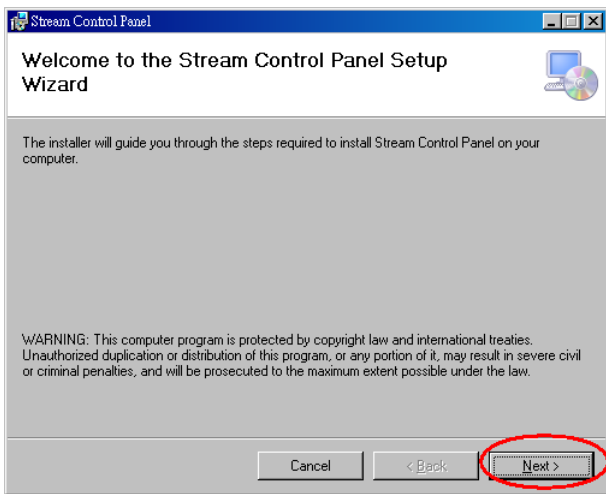
- j. Click on Network tag and you will see the IP address of transmitter.



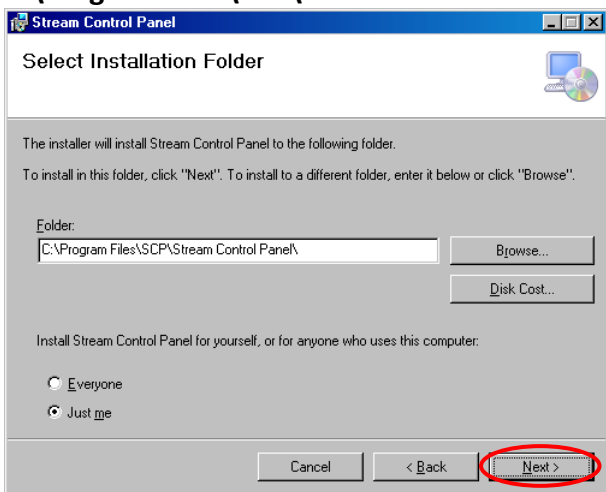
Stream Control Panel Installations:

1. Run the **setup.exe** file in SCP folder. 

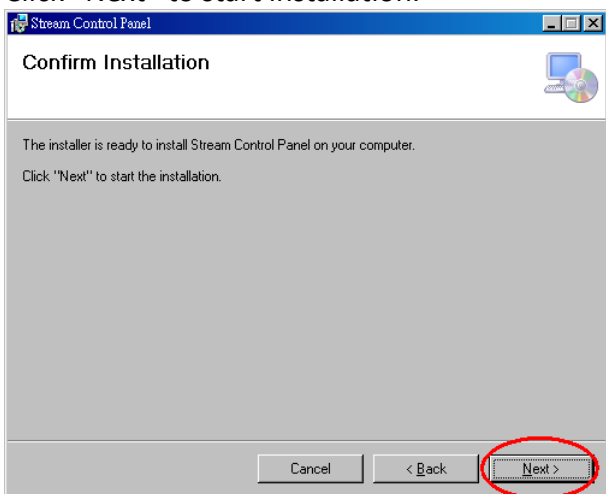
2. Click “Next” to continue the installation.



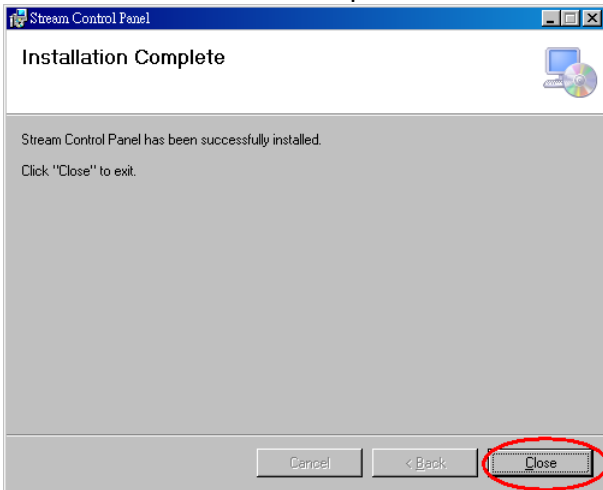
3. Click the “Next” to install or Browse to change the install folder you prefer, the default folder is **C:\Program Files\SCP\Stream Control Panel**.



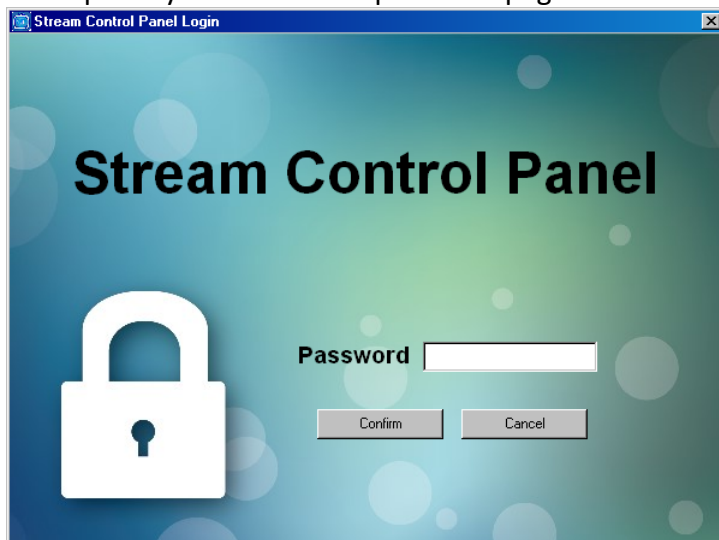
4. Click “Next” to start installation.



5. When installation finished please click “Close” to exit.



6. After installation you could run the program from “Start → All Programs → SCP” or shortcut on desktop and you will see the password page as below.

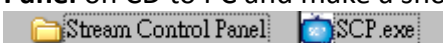


The default password is **1234**, you could modify in **System Settings(S)→Password(P)** function.

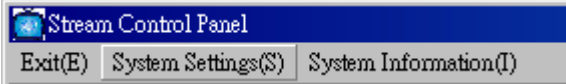
7. After key-in password you will see the main panel as below.



8. If any problems caused installation not successes you could copy the installed folder **Stream Control Panel** on CD to PC and make a shortcut for **SCP.exe** manually.



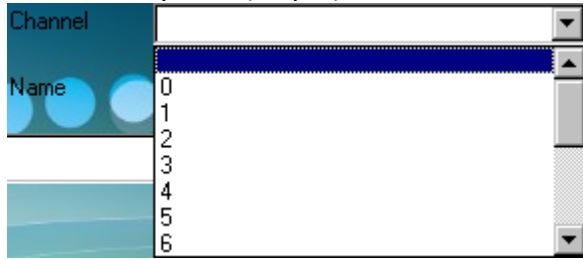
Stream Control Panel Settings:



1. Exit(E): close the program.
2. System Settings(S): Main settings of Client, Host and Group for stream control, Password and language setting
3. System Information(I): Copyright and version information.

c. Select "Channel:"

When Query Mac (step b) it will auto detect and set channel to 0~9 or A~F, total 16 channels.



If the Channel No. is duplicate it will pop-up a message: "Channel field can not be repeated."



If the Channel No. not inputted it will pop-up a message: "Channel field can not be blank."



d. Name and Memo:

You could input the name of device and simple memo to identify the source or else.

The name must be inputted, if not it will pop-up a message: "Name field can not be blank."



e. Add:

Once you finish above information please click "Add" to join the transmitter to the list below:

IP	MAC	Channel	Name	Memo
169.254.1.71	112233445566	1	DVD1	DVD1

If the IP address is duplicate it will pop-up a message: "IP field can not be repeated."



c. Set "No.:"

You could input the number of receiver by digits, alphabet or any characters.

Notice: the number must be unique, not duplicate with any other receiver.

If you use duplicate No. it will pop-up a message: "No field can not be repeated."



d. Name and Memo:

You could input the name of device and simple memo to identify the monitor or else.

The name must be inputted, if not it will pop-up a message: "Name field can not be blank."



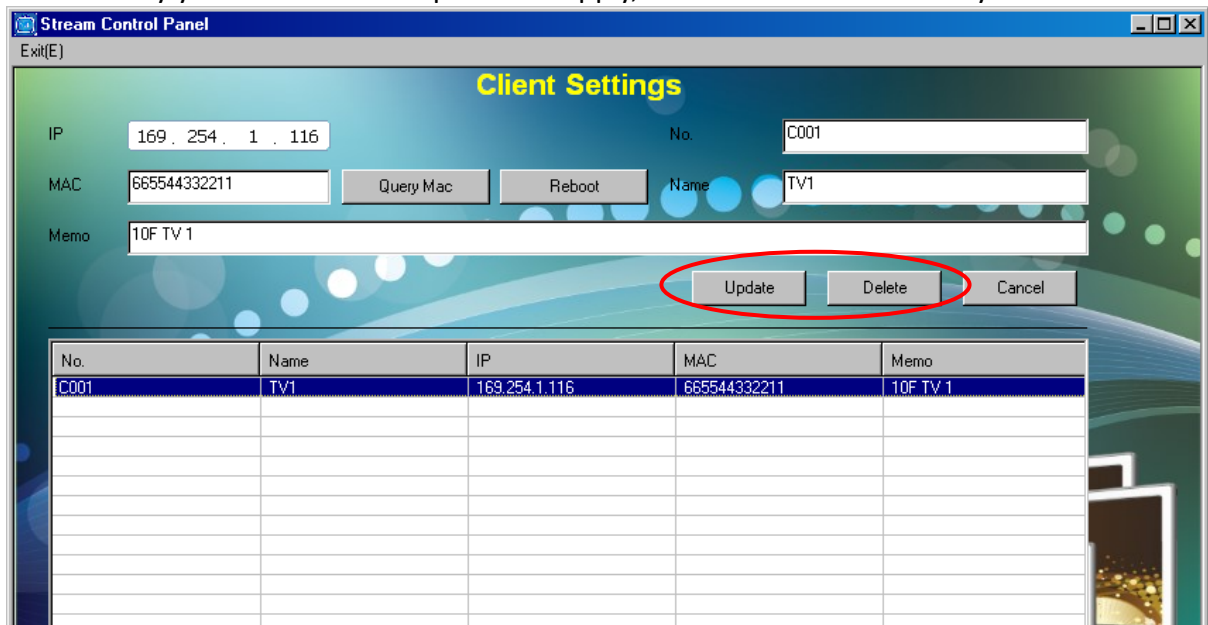
e. Add:

Once you finish above information please click "Add" to join the receiver to the list below:

No.	Name	IP	MAC	Memo
C001	TV1	169.254.1.116	665544332211	10F TV 1

To amend exist client settings please click in the list, it will shows Update and Delete icon for modification. **(No. is not able to changed)**

After modify you have to click "Update" to apply, delete will be immediately.

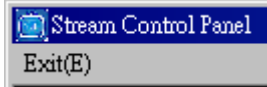


f. Reboot:

Remote reboot the receiver if error accrued, booting require around 30 seconds.

g. Exit(E):

Click "Exit(E)" to return main menu.



3. System Settings(S)→Group(G):



You could add several receivers in a group for better management.

a. Set “No.:

You could input the number of receiver by digits, alphabet or any characters.

Notice: the number must be unique, not duplicate with any other group.

If you use duplicate No. it will pop-up a message: “No field can not be repeated.”



If the No. is not inputted it will pop-up a message: “No. field can not be blank.”



b. Name:

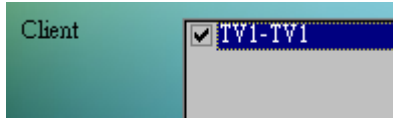
You could input the name of device and simple memo to identify the monitor or else.

The name must be inputted, if not it will pop-up a message: “Name field can not be blank.”



c. Client:

Click the existing receivers in the list which you add before to choice them.



d. Add:

Once you finish above information please click “Add” to join the group to the list below:

No	Name	Client
TV1	TV1	TV1-TV1

To amend exist group settings please click in the list, it will shows Update and Delete icon for modification.

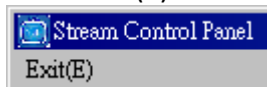


If there is no receiver been chosen it will pop-up a message:“Client field can not be blank.” when click the “Add” button.



e. Exit(E):

Click “Exit(E)” to return main menu.



4. System Settings(S)→ Password(P):

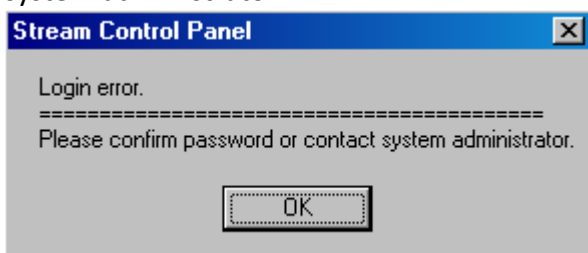
You could set the password to prevent users to modify the settings of Steam Control Panel. The default password is **1234**, you could modify in **System Settings(S)→ Password(P)** function.



If you do not enter anything and click "Confirm" it will pop-up a message:"Please enter the Password."



If the password incorrect it will pop-up a message:"Login error. Please confirm password or contact system administrator."

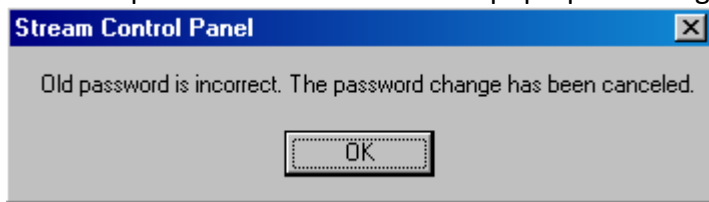




a. Old Password:

Input original password, default is **1234**.

If the old password is incorrect it will pop-up a message: "Please enter new password again"



b. New Password:

Input the new password you prefer.

c. New Password Again:

Input the new password again for confirmation.

If it is empty it will pop-up a message: "Please enter new password again"



If the new password not mach it will pop-up a message: "Password not match"

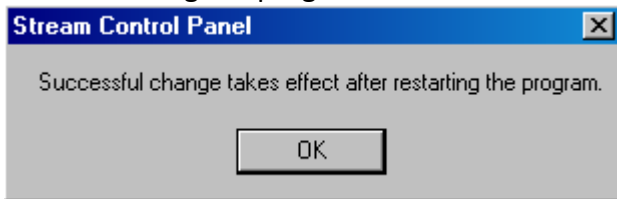


d. No password:

You could disable password by click this function, if password exist it will pop-up a message: "Please enter old password"



Once you change the status of password it will pop-up a message: "Successful change takes effect after restarting the program."



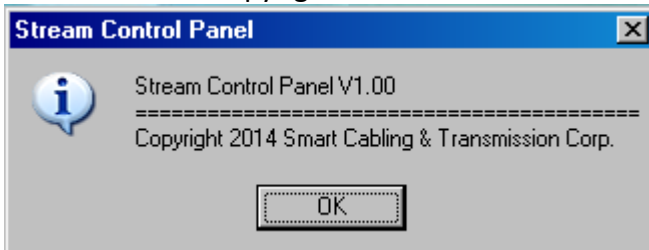
5. System Settings(S)→ Language (L):



There are two language can be select: 0-English, 1-Chinese (Traditional)
You have to restart the program to effect the language setting.

1. System Information (I):

It will show the Copyright and software version information.



Stream Control Panel Operation:



1. START STREAM:



Start stream by Host, Client and Group settings.



a. Channel:

Drop-down menu to select existing transmitters you prefer to start stream.

b. Mode:

Drop-down menu to select two modes: HDMI Video + HDMI Audio or HDMI Video + Analog Audio.

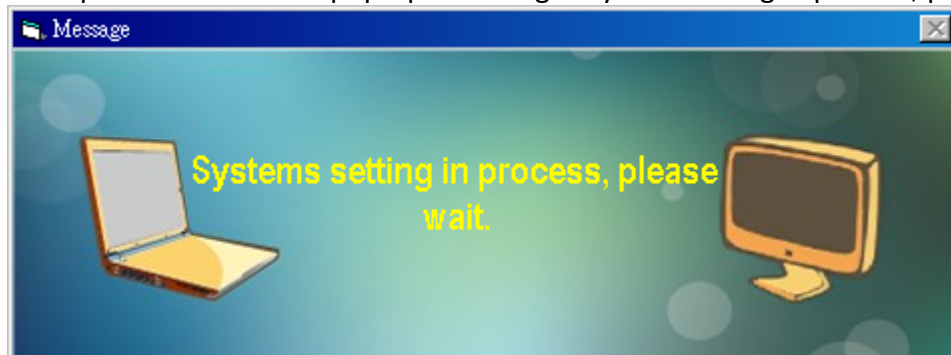
Notice: in HDMI Video + Analog Audio mode, the HDMI audio will be disabled. For DVI source or audio broadcasting please use this mode.

c. Client:

You could click All, group or single client and press “Start” to start the stream.

No.	Client Name	Channel	H
<input checked="" type="checkbox"/>	All	All Client	
<input type="checkbox"/>	G001	Group 1	
<input type="checkbox"/>	C001	TV1	

After press “Start” it will pop-up a message” System setting in process, please wait.”



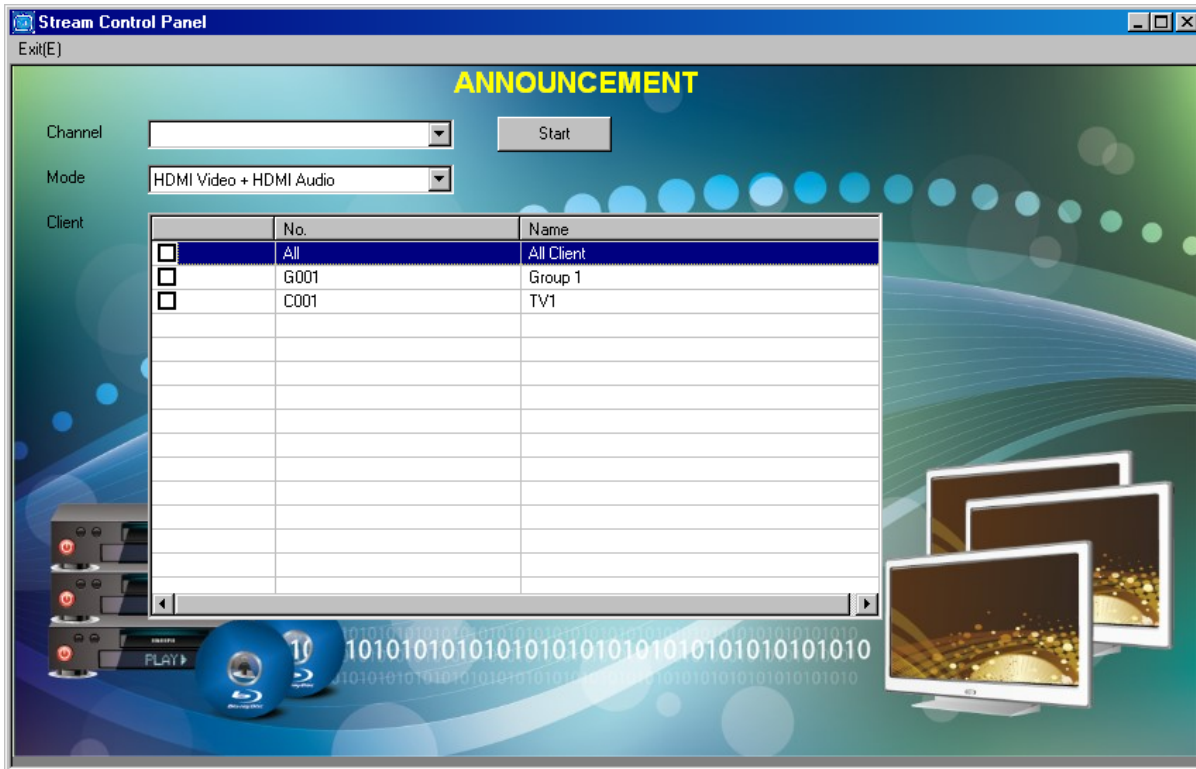
It will shows the stream status in list as below:

	No.	Client Name	Channel	Host Name	Mode
<input type="checkbox"/>	All	All Client			
<input type="checkbox"/>	G001	Group 1			
<input type="checkbox"/>	C001	TV1	1	DVD1	HDMI Video + HDMI Audio

3. ANNOUNCEMENT:



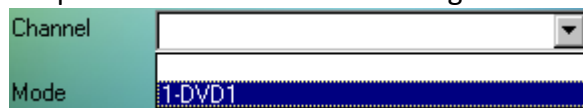
Temporarily interrupts broadcasting.



Using this function to immediate broadcasting and not effort existing channel settings.

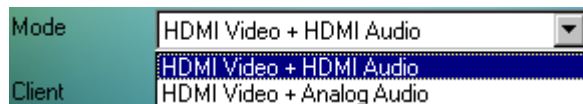
a. Channel:

Drop-down menu to select existing transmitters you prefer to start stream.



b. Mode:

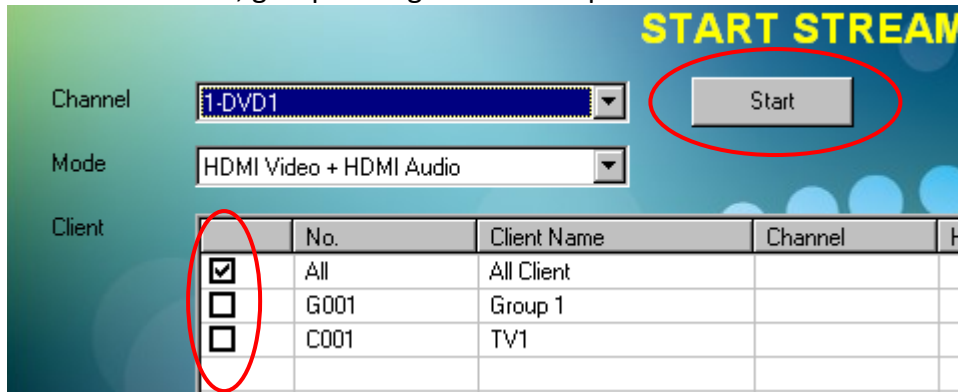
Drop-down menu to select two modes: HDMI Video + HDMI Audio or HDMI Video + Analog Audio.



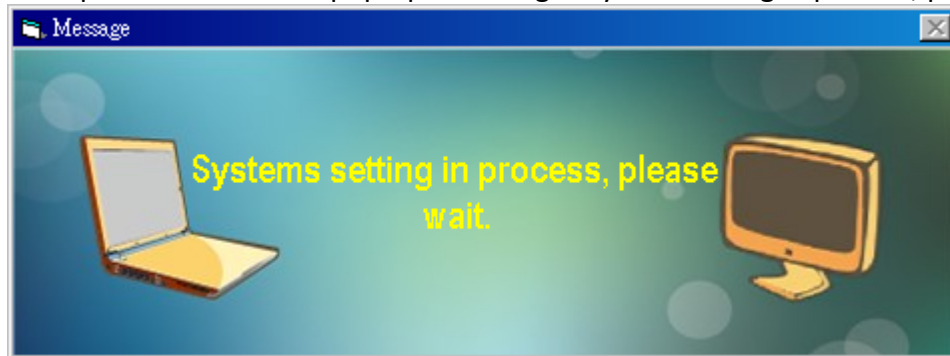
**Notice: in HDMI Video + Analog Audio mode, the HDMI audio will be disabled.
For DVI source or audio broadcasting please use this mode.**

c. Client:

You could click All, group or single client and press "Start" to start the stream.



After press "Start" it will pop-up a message "System setting in process, please wait."



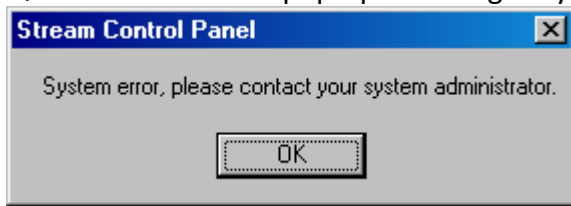
It will show "Announcement... Are you Stop?" when start.



When you finish please click "Stop" to end the announcement.

Trouble shooting:

Q: Error accrued and pop-up a message: "System error, please contact your system administrator."



A: Please report to us the message shows in which operation for analyses.